



2025 RESEARCH & RANGAHAU REPORT

Academic Success

April 2026

2025 RESEARCH & RANGAHAU REPORT



| From your Research & Innovation Team |

2025 was a very successful year for research at Whitireia and WelTec, with the number of research outputs entered in ROMS well up from 2024. Congratulations to all kaimahi undertaking research in all its forms as well as to Programme Managers and others pivotal in increasing research across the institution.

While it is a NZQA requirement for all kaiako in Level 7 bachelor's programmes and above to be research active, undertaking a research project brings enjoyment and satisfaction as you navigate a project from start to finish. There is also plenty of support available to you when embarking on a research journey, from your Senior Research Advisors, Lee Smith (Health and Wellbeing, Pacific Health and Social Practice, Te Wānanga Māori) and Ahmed Al-Sa'di (Innovation Design and Technology). Lee and Ahmed's role is to help all kaimahi undertaking research in whatever form it is needed.

Whitireia and WelTec are proud to have many research champions, some of whom are profiled in this newsletter. To enable us to celebrate your research, please ensure all research outputs (such as journal articles, chapters, conference/symposium presentations etcetera) are

In this issue

From your Research & Innovation Team

ROMS

Whitireia & WelTec Teaching & Research Hui 2025

Research Grants

TREF versus PBRF

Open access & article publishing fees

Collecting ethnicity data

Research Spotlight

Centre for Pacific Health & Social Practice

Health & Wellbeing | Te Kura Hauora

Innovation, Design & Technology

Construction & Engineering Trades

Te Wānanga Māori

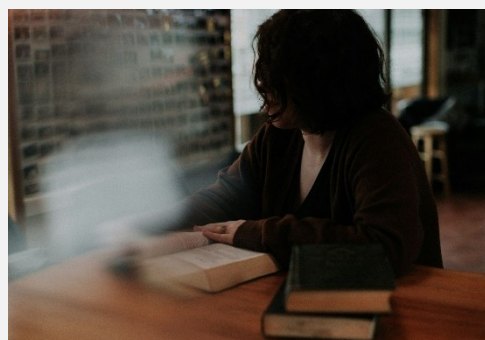
Research & Innovation Fund

Ethics & Research Committee

entered into ROMs. This is essential because this data is shown during monitor’s visits and to the Tertiary Education Institution. The Research and Innovation Team are also keen to celebrate your research activities and need to be aware of your research.

ROMS

In 2025, the Research Output Monitoring System (ROMS) was updated and a new feature added. Kaimahi can now tag other researchers within the institution so that they do not have to enter separate entries, which will be a time saver for all involved. A quick point of clarification, if you present at a conference or symposium and there is no associated paper published in proceedings, please add this as a *conference other* instead of an *oral presentation*.



An oral presentation may be a presentation at a professional organisation for instance, rather than a conference/symposium per se. A new user guide to entering outputs into ROMS is available on the Research and Innovation [SharePoint page](#).

Remember that the Research and Innovation Team also need proof that researchers have undertaken their research for NZQA monitoring. [A list of what constitutes proof is available on our site](#), however, some of the most likely outputs that will be entered are included below:

Category	Sub-category	Evidence
Article	Journal article	An electronic copy of the article
		DOI
		Publisher’s letter
Conference/symposium	Conference paper Abstract Presentation Poster	Conference programme
		Letter of acceptance from conference organisers
		DOI
Report		Letter from, or online record on webpage of commissioning body
		DOI
Thesis - PhD and Master’s		An electronic copy of the title page for the thesis and bibliographic details
		Library catalogue record

Whitireia & WelTec Teaching and Research Hui 2025

2025 ended with a major event for the Teaching and Research community at Whitireia and WelTec. On Thursday 4 December, the Whitireia and WelTec Teaching and Research Hui 2025 | *Evolving Practice in Teaching & Research* | *Whakawhanake whakaako, Whakawhanake haurapa* was hosted at Whitireia Porirua Campus. It was fantastic to see so many kaiako and postgraduate ākonga presenting and attending the event. The keynote, Dr Selena Chan from ARA, highlighted how those in vocational education are well placed to undertake research on areas/topics/fields that are unique to our setting, which researchers need to identify and pursue. The Academic Success Team are looking forward to hosting a similar hui in December this year; keep an eye on Te Kāinga for communications over the coming months.



If you also have had three high quality research outputs over the last two years, then do not forget to nominate yourself for one of the four Whitireia and WelTec Research Awards that acknowledge your work. Congratulations to all the winners of the Research Awards presented at the Teaching and Research Hui 2026.



Research Grants

In 2025, the Government disestablished several organisations that previously offered research grants (e.g., Ako Aotearoa), while the grants for some (Health Research Council) are being restructured to sit under the Ministry of Business Innovation and Employment (MBIE) portfolio. The Marsden Grant (The Royal Society) was reconfigured so that research in the Humanities, Social Sciences and Arts will not be funded as previously.

In 2026, the Research and Innovation Team will be providing regular updates as to any funding or grant opportunities arising. If you are interested in applying for an external research grant, please contact your Senior Research Advisor who can assist you in this process.

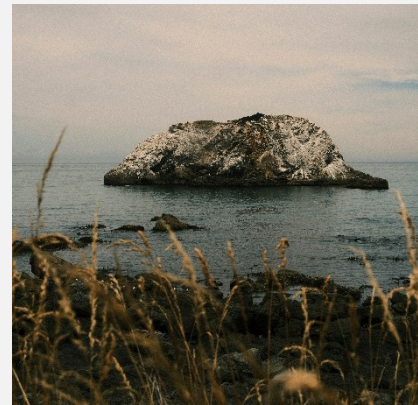
Tertiary Research Excellence Fund versus Performance Based Research Fund

Currently, the Government is revamping the funding that tertiary and vocational education institutions receive for their research outputs. The Performance Based Research Fund (PBRF), that focussed on the number and quality of research outputs amongst other factors, such as researcher contributions to the community and course completion rates, is being disestablished. From 2026 the Tertiary Excellence Research Fund (TREF) will replace the PBRF's Quality Evaluation component (where researchers garnered a ranking of A, B, C or beginning researcher depending on their submitted research portfolio) with a metric-based assessment of tertiary providers' research performance. We are still awaiting details on this new fund. At this stage, initial indicators suggest that research with industry, as well as securing non-Government research income, will be prioritised. The Research Team will keep you informed when they know more.

Open access and article publishing fees

Academic journals are ranked according to how many times the articles within have been cited versus the number of articles published in the journal over the previous two years, which results in an impact factor. Generally, publishing in high impact factor journals is considered more prestigious than publishing in those with a low or no impact factors, however, it is also more expensive.

After an article has been accepted for publication, some higher impact journals will ask researchers for an Article Process Charge (APC) to cover article editing and processing costs. Some will also charge a publishing open access fee, which may or may not be covered in the APCs. The Research and Innovation Fund can be approached to cover these costs; however, if collaborating on a project with university researchers, then it is likely they will have a university account with the journal publishing houses and therefore can pay for these costs if they are nominated as corresponding author. It is best to get an idea of the APC costs prior to submitting an article to a journal.



Collecting ethnicity data

When conducting research, researchers may collect demographic data from participants. This is typically achieved in a survey by asking, 'What is your ethnicity?', with several tick box options provided. However, the ethnicities presented in these tick boxes can vary between surveys; a new resource aimed at providing some guidance regarding the collection of ethnicity data is available [here](#). Please remember, however, that if data on Māori or Pacific Peoples is being collected, then researchers should consult with Jeanette Grace or Jean Mitaera, respectively.

Research Spotlight

In this issue, the Research and Innovation Team continue to profile some of our research active Whitireia and WelTec kaiako.

Te Wānanga Māori | Shayola Koperu (Bachelor of Nursing Māori)

Shayola Koperu has been employed at Whitireia since 1995, and she is the Programme Manager of the Bachelor of Nursing Māori. Shayola presented three sessions at the Whitireia and WelTec Teaching and Research Hui in December and generously chaired a session.

When asked what she enjoys about undertaking rangahau, Shayola explained that it is “belonging to a community of Māori and like-minded people who are curious about a whole lot of stuff”. She also enjoys “progressing Kaupapa Māori research in the academy to articulate the value of this approach to budding Māori researchers” as well as “engaging with indigenous researchers who are immersed in indigenous research internationally”.



Shayola Koperu

Shayola has presented at numerous conferences/symposia on Kaupapa Māori and her rangahau has generally focused on how Kaupapa Māori is embedded into Whitireia’s Bachelor of Nursing Māori programme. She is presently involved in a study with Tania Mullane (Programme Manager Bachelor of Nursing Pacific) and Leanne Pool (Victoria University of Wellington Nursing kaiako) exploring ākonga and kaiako experiences of the integration of indigenisation into the Bachelor of Nursing Māori and Bachelor of Nursing Pacific programmes. Elaborating on this project Shayola states:

The mahi undertaken in collaboration [with the] above, identified three core phases we moved through giving us a practical template for how our programme can operate in the research space. It’s a way for all kaiako to contribute to research that benefits Māori, keeps the fires burning he ahikā and prioritises Māori interests. It’s using the power of rangahau to help redress inequities and disparities facing Māori. We as a programme move forward by walking backwards into the future, staying accountable to what has come before, so we never forget he ahikā.

Shayola states that it is important to undertake rangahau to “grow mātauranga a whānau, a hapū a Iwi” and contribute “to the wider communities of indigenous rangahau”. It is also important to undertake rangahau to ensure “active Māori researchers who can work with hapori Māori to address their needs”.

When asked what suggestions Shayola had for Māori kaimahi wishing to undertake rangahau with Māori, she said:

- Be in Action
- Engage with active curious people who walk the talk
- Surround yourself with mana enhancing mauri animating people

Thank you Shayola for sharing your insights with us; we wish you all the best with your research.

Centre for Pacific Health & Social Practice | Teramira Schütz (Bachelor of Nursing Pacific)

One of the most research active kaiako in the Bachelor of Nursing Pacific programme is Teramira (Mira) Schütz; we are excited to be able to profile Mira.

In 2022, Mira graduated with her PhD, titled *Navigating Health Practices for I-Kiribati Immigrants in New Zealand*, from Te Herenga Waka-Victoria University of Wellington. Mira finds research rewarding, explaining that it allows her to identify a problem, involve her community in the research, and identify solutions for how an issue can be overcome. For instance, “how some health approaches and working or not for some individuals” and how they can be reconfigured in a “culturally appropriate manner”, which in turn provides for a more “safe and conducive environment”. In her own words Mira states:



Teramira Schütz

Having learned, experienced or see[n] my community and the people around me affected by [a] problem make[s] me curious about how to turn these problems into opportunities and solutions, particularly [for] the minority of the minority, and vulnerable population[s], like my Kiribati community.

For Mira, research is essential for her as a nursing kaiako because it “push[es] [her] to [her] full potential [and is necessary] for [her] own professional development as an I-Kiribati born New Zealand citizen, family [member], and [for the] different communities [she is a member of].

Mira viewed her PhD as a form of “‘professional development’, the same as when you are a tutor or a nurse, you need to stay abreast with professional development”. Framing her research this way meant it was more manageable than framing it as a PhD thesis, which seemed “laborious, exhausting, and hard to achieve”. She completed her doctorate “one step at a time” over six years (part time) and acknowledges how the excellent support of her two supervisors, her family and “her spiritual faith” were pivotal for her PhD completion.

Mira explains that any Pacific individual can pursue PhD study; however, she also notes that Pacific people have “cultural values that are important to us, including family, communities, church commitments and responsibilities”. She explains that “we need to balance our study with [these] commitment and responsibilities [and] draw in our family support to help us on the PhD journey [we walk together]”. Mira encourages other Pacific researchers thinking of undertaking PhD study to hone the following attributes, which she states are necessary for success:

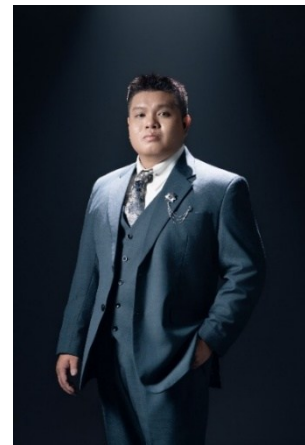
- Believe in yourself, you are the ‘original’ of your own creativity and writing through your thesis will contribute to Pacific knowledge.
- Demonstrate a high level of commitment, resilience, self-discipline, passion, perseverance, and goal orientation
- Demonstrate effective communication to your supervisors; take the lead to write meeting notes during your supervision meetings and meet your target timeframe, but do not shy away from asking for extra support from your supervisors or elsewhere.
- Critically reflect on your PhD progress, acknowledge your strengths, work on identified weaknesses and take feedback positively.

- Talk to people about your research, e.g., your work colleagues, your family, communities, researchers, church and expand your networks
- Keep abreast of current literature on your research topic.
- Balance your commitments and responsibilities with your study and ensure you look after yourself.

Thank you, Mira, for being willing to contribute to this newsletter.

Innovation, Design & Technology | Hoang Nguyen (Information Technology programmes)

Congratulations to Hoang Nguyen for an outstanding year of research achievement and recognition. Hoang's research interests centre on applied data science and AI, with a particular focus on solving complex problems in biology, drug discovery, health, and social domains. His research portfolio demonstrates depth and diversity, with contributions extending across computational biology, molecular modelling, and transformer-based prediction systems. His publications in anticancer peptide identification, blood-brain barrier permeability prediction, and computational drug-design pipelines reflect his strong foundation in both biotechnology and data science.



Hoang Nguyen

Hoang completed his PhD in Data Science at Te Herenga Waka-Victoria University of Wellington and has contributed to research in New Zealand through his role as a kaimahi in the School of Information Design and Technology at WelTec, as well as prior experience as a data scientist in health and environmental analytics. His international and interdisciplinary background continues to enrich the School's research culture.

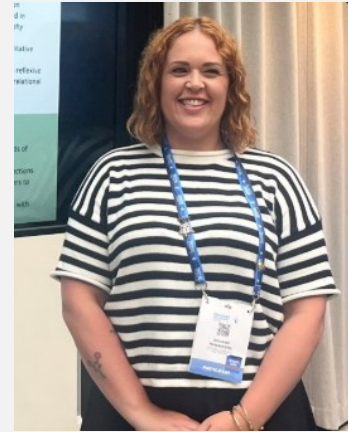
The Research Team extends heartfelt congratulations to Hoang Nguyen for winning the 2025 Research Excellence Award, a well-deserved recognition of his commitment to rigorous inquiry, innovation, and emerging leadership within applied AI research. His contributions at the Teaching and Research Hui and his ongoing collaborations exemplify the growing research capability within the Information Technology programmes. We look forward to seeing Hoang's research continue to flourish in 2026 and beyond.



School of Health & Wellbeing | Shivann Ramaekers (Bachelor of Nursing)

Shivann Ramaekers is a kaiako in year two Bachelor of Nursing teaching team, “which [she] love[s]”. Shivann is very busy, working full-time, undertaking research, raising two teenagers, and studying for her professional doctorate.

Her PhD is focused on exploring “registered nurses’ experiences of joy in their clinical practice”. She was motivated to study this topic because of her “interest in what sustains nurses and a desire to move away from the predominantly, deficit focused narratives in nursing literature”. In 2025, Shivann presented at the 2025 International Council of Nurses (ICN) in Helsinki” (see image), which she describes as a “really exciting experience”.

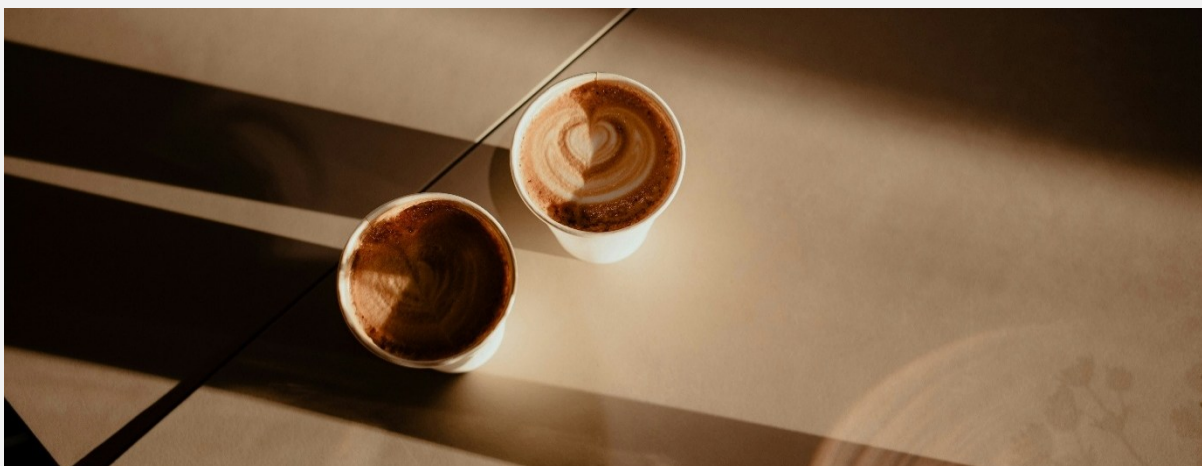


Shivann Ramaekers

When asked what she enjoys about research, Shivann explains that is “working with participants and learning from their perspectives”. She also “love[s] asking questions, exploring the unknown, and experiencing the ‘aha’ moments when participants’ experiences reveal new insights”. Additionally, Shivann values “the personal growth...networking and collaboration with colleagues, and [how] research allows [her] to contribute to improving practice and making a difference in the nursing profession”.

When asking how she manages her busy life, Shivann states that she is “incredibly lucky to have a very supportive family, managers and colleagues”; however, “juggling everything is still challenging”. In her research, Shivann sets herself “small, weekly goals...and tr[ies] to stick to them as much as possible”. “Late nights, lots of coffee, and more than a few venting sessions with friends and family” also help her on her postgraduate research journey. When asked what advice she has for those about to embark on their doctoral journey, Shivann maintains that setting goals, writing them down, being organised, and breaking work into small, achievable chunks, helps.

Most importantly, she advises anyone considering PhD study to “choose a topic you genuinely love, because you’ll be living and breathing it. It’s always on my mind, and having something I feel passionate about makes the process feel exciting rather than a chore”.



School Rangahau & Research

In the following section we are pleased to share with you research projects that are underway across our Schools. If your study is missing from this newsletter, please get in touch with the Research and Innovation Team. Please discuss your research with your Programme Manager, your Senior Research Advisor and enter all outputs into ROMS.

Centre for Pacific Health & Social Services

Many kaiako in the School of Pacific Health and Social Practice are continuing to engage in collaborative and/or longitudinal research with universities and external research organisations.

Bachelor of Nursing Pacific | Mira Schutz and Loma-Linda Tasi have been working with external researchers on collaborative externally funded research. Most kaiako were involved in Whitireia and WelTec Teaching and Research Hui presentations, while Loma-Linda Tasi also presented at a conference in Christchurch. Kaiako in the Cook Islands are also undertaking further postgraduate study. Congratulations to Rachel Bowen for completing her M.Prof.Prac. by praxis project.

This programme has established links to various Pacific Island communities, Pacific Research Organisations and Pacific researchers. In stating this, the Research and Innovation Team congratulate Dr Tracie Mafile’o from Mana Pacific (a Pacific research organisation that many of the Bachelor of Nursing Pacific kaiako have worked alongside on various research projects) for receiving a New Year’s Honour.



Dr Tracie Mafile’o

Bachelor of Social Work | In 2025, three members of the Bachelor of Social Work team had research outputs. Congratulations to Ashleigh Price and Hawa Fitzgerald, the research stalwarts of this team, as well as Dominika Zmuda who presented at the Whitireia and WelTec Teaching and Research Hui for the first time. Programme Manager Roger Ngahooro also continues his PhD journey.



Health & Wellbeing | Te Kura Hauora

The School of Health and Wellbeing is research active with remarkable increases in nursing outputs in 2025. Thank you to Programme Manager Miriam White, for championing research across nursing programmes.

Bachelor of Health Science (Paramedicine) | In 2025, a paramedicine research group was established with industry providers, including Wellington Free Ambulance, where many Whitireia kaiako are also employed part-time. We are looking forward to a fruitful partnership where quality collaborative industry-based research is conducted. Congratulations to Emily Wynch for completing her M.Prof.Prac. and being selected to present her poster in an Australian Paramedic Conference. Paramedicine kaiako Reuben Corlett, Hazel Brake and Vicky Field presented at the Whitireia and WelTec Teaching and Research Hui in December. Currently, many paramedicine kaiako have research projects underway with one manuscript recently submitted to a journal.



Bachelor of Nursing | From 2024, there was an amazing 443% increase in research outputs amongst Bachelor of Nursing kaiako. Three journal articles were published with 35 further research outputs comprised of a report as well as presentations at nursing conferences and the Whitireia and WelTec Teaching and Research Hui. Several of these presentations will also be developed into articles in 2026. Congratulations to Belinda McGrath, Lauren Addington, Katie Owen, Tia Minnoch, Shivann Ramaekers, Cathy Tuohy, Sandra Jones, Katie Croom, Anne-Sophie Poot, Adrienne Cosslett, Anna Davidson, and Petrina Turner-Benny for research outputs in 2025. The Research and Innovation Team would like to acknowledge Katie Owen for facilitating a collaborative research team of five. To date this collaboration has resulted in two conference/hui presentations and two journal manuscripts, with one recently published in the *Journal of Teaching and Learning for Graduate Employability*.



Enrolled Nursing | The Enrolled Nursing team also began to undertake research in 2025. Dawn Bailey is involved in a study on ākonga non-course related digital device usage with two Bachelor of Nursing and one Paramedicine kaiako. Shona Urquhart also presented at a conference at the beginning of 2025 alongside Alex Wordsworth and Katie Owen.

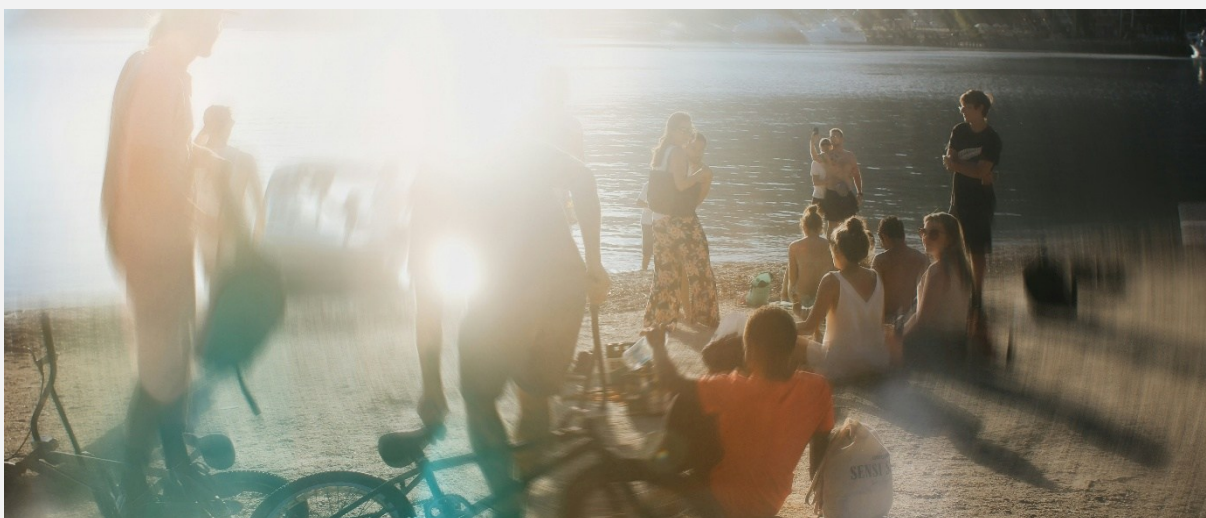
Postgraduate Nursing | Kaiako in these programmes are very motivated and engaged in research, and 2025 was no exception. This team published a combined journal article, an externally funded report, two posters and conference/hui presentations. Many kaiako in the postgraduate nursing programmes are involved in research with kaiako in other health programmes. The new Nursing Pou (De’arna Rush, Vicky Jennings and Tane Rangihuna), and Māori rangatahi service users (De’arna Rush and Wendy Trimmer) are at the centre of ongoing research. At the same time, Abbie Ranui and Georgia Collins are in the process of publishing an article from an external report on peer support workers. In 2025, Abbie Ranui, Cath Fuller, Vicky Jennings, Wendy Trimmer and De’arna Rush all had research outputs, alongside Georgia Collins (Peer Support and Academic Service) and Tane Rangihuna (Kairarahi Ahurea). Other postgraduate kaimahi including former Programme Manager Kerri Arcus and Tony Heyward, also published but have since retired.

The Research and Innovation Team also congratulate De’arna Rush for receiving a special commendation for the 2025 Whitireia and WelTec Te Tohu Kairangi o Te Kōrari Rangahau award. Well done De’arna!



De’arna Rush and Leanne Ivill

Clinical Simulation | Congratulations to Shelly Winters for having an article published in the *Whitireia Journal of Nursing, Health and Social Services* alongside Ashleigh Price from Social Work. Alex Wordsworth and Shelly Winters are proactive researchers in this programme and Alex is involved in international collaborative research. Alongside Shona Urquhart, Alex delivered a presentation at the New Zealand Nurses’ Organisation Conference.



Innovation, Design & Technology

2025 was a year of significant growth, collaboration, and research productivity for the School of Innovation, Design and Technology. Kaiako across Engineering, Business, Creative Technologies, Information Technology, Professional Practice, and Built Environment contributed outputs that reflect the school's multidisciplinary character and strong industry alignment.

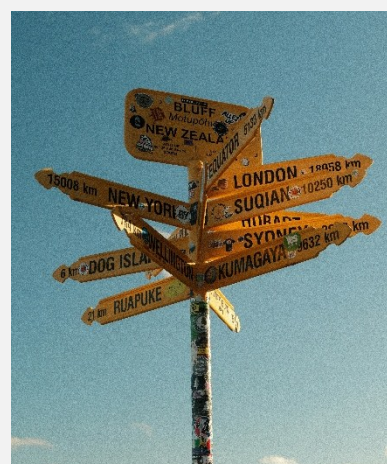
The Research and Innovation Team acknowledge major postgraduate achievements, contributions to international conferences, and strengthened cross-school engagement. The annual research retreat (November 2025) brought together researchers from across the school to plan collaborations and deepen their research identity as a connected applied-technology School.



Business | Business kaiako had many outputs in 2025, including journal articles, international conference papers, an AI-and-blockchain publication, and completed doctoral theses. The programme's research profile continues to strengthen through international collaborations and real-world, industry-relevant topics. Swati Kumaria Puri successfully completed her PhD in 2025 and presented internationally. The Research and Innovation Team also acknowledge Richa Panjabi for her international presentations alongside Swati, including work on emotional pathways and trust dynamics in social commerce.

Business also celebrated Shan Abdur Rahman, who completed his doctoral thesis and produced outputs in Communications of the Association of Informed Systems (AIS) and several conferences exploring luxury brand storytelling, qualitative comparative analysis, and charisma expression. Yi-Mei Huang presented on knowledge management strategy and organisational learning futures.

The Research and Innovation Team is delighted with the scale and diversity of research emerging from Business and congratulates all kaiako for representing Whitireia and WelTec so strongly.



Information Technology | Congratulations to kaiako in the Information Technology programme for a highly productive and impactful research year in 2025. The programme continues to strengthen its identity as a hub for applied computing, AI-related scholarship, and interdisciplinary technology research across Whitireia and WelTec.

In 2025, IT kaiako produced a diverse portfolio of outputs, including an international book chapter, peer-reviewed articles, presentations at Whitireia and WelTec’s Teaching and Research Hui, thesis completions, and collaborative cross-school projects. This work reflects the commitment of the programme to both technical and human-centred computing research.

A special acknowledgement is extended to Hoang Nguyen, who contributed to research activities but was also awarded the Whitireia and WelTec Research Excellence Award for outstanding achievement this year. Also, congratulations to Steven McKinlay, whose chapter ‘Fallible Machines: The Myth of Foundationalism in an Algorithmic Age’ was included in *AI and Democracy*, published by Edinburgh University Press. Steve also presented internationally on large language models and computing philosophy. His contributions continue to showcase the programme’s strength in critical, conceptual, and philosophical perspectives on AI.



Hoang Nguyen and Leanne Ivill

Creative Technology | Creative Technologies kaiako produced research outputs in 2025. Congratulations to Alice Moore and Brenda Saris, who presented a poster at the Teaching and Research Hui on transnational design teaching, as well as submitting a manuscript focused on transnational design teaching in China. Currently, this manuscript is under review and ideally, will be included in a special edition of the *New Zealand Journal of Education Studies*, focused on transnational education. Good Luck!



Professional Practice | Congratulations to the Master of Professional Practice team for sustained and meaningful contributions throughout 2025. Joey Domdom co-authored a journal article in the *New Zealand Journal of Education Studies* focusing on the experiences of first-in-family learners transitioning into degree study. Joey also presented at the Whitireia and WelTec Teaching and Research Hui on the use of AI tools and on social media integration for international students.

Rachel Tallon produced a well-received article in the *Whitireia Journal of Nursing Health and Social Services*, offering reflective insights on deviance and social experience during the COVID-19 pandemic. Sanam Maskey presented at the Oceania Comparative International Education Society (OCIES) Conference in Christchurch as well as the Whitireia and WelTec Teaching and Research hui, alongside Rachel and Joey. Here is a snapshot of him in OCIES's online summation of the conference:

Sanam Maskey



Dr [Sanam Maskey](#) presenting on 'Ruptures in relationships: Implications of neoliberalism in education on Indigenous communities in Nepal. The people of Newar, an indigenous community in Nepal, have been practising their unique language, culture, and traditions for centuries. However, this rich knowledge is increasingly being impacted by the adoption of Eurocentric Western models of development as universal and the influence of neoliberalism in formal education.

The Research & Innovation Team extends warm congratulations to these kaiako for their dedication to practice-based scholarship and ongoing engagement in research and teaching integration.

Construction & Engineering Trades

We welcome and support Construction and Engineering kaiako to undertake research if they are interested in doing so. Please get in touch with Ahmed Al-Sa'di, the Senior Research Advisor for this School, if you are keen to explore research in the future!



Te Wānanga Māori

Bachelor of Nursing Māori | Congratulations to kaiako in the Bachelor of Nursing Māori who not only had almost all ākonga pass their state finals but also increased their research outputs exponentially in 2025. The Bachelor of Nursing Māori kaimahi delivered many presentations at the Teaching and Research Hui, with Programme Manager Shayola Koperu being involved in three and chairing another session. Congratulations to Moana Tuito, Deni Tipene, Kare Iraia, and Michelle McGhie for being involved in their first research presentations and thank you to established members of the team who presented. The Research Team are excited about the impetus on rangahau and research emerging in Te Wānanga Māori.

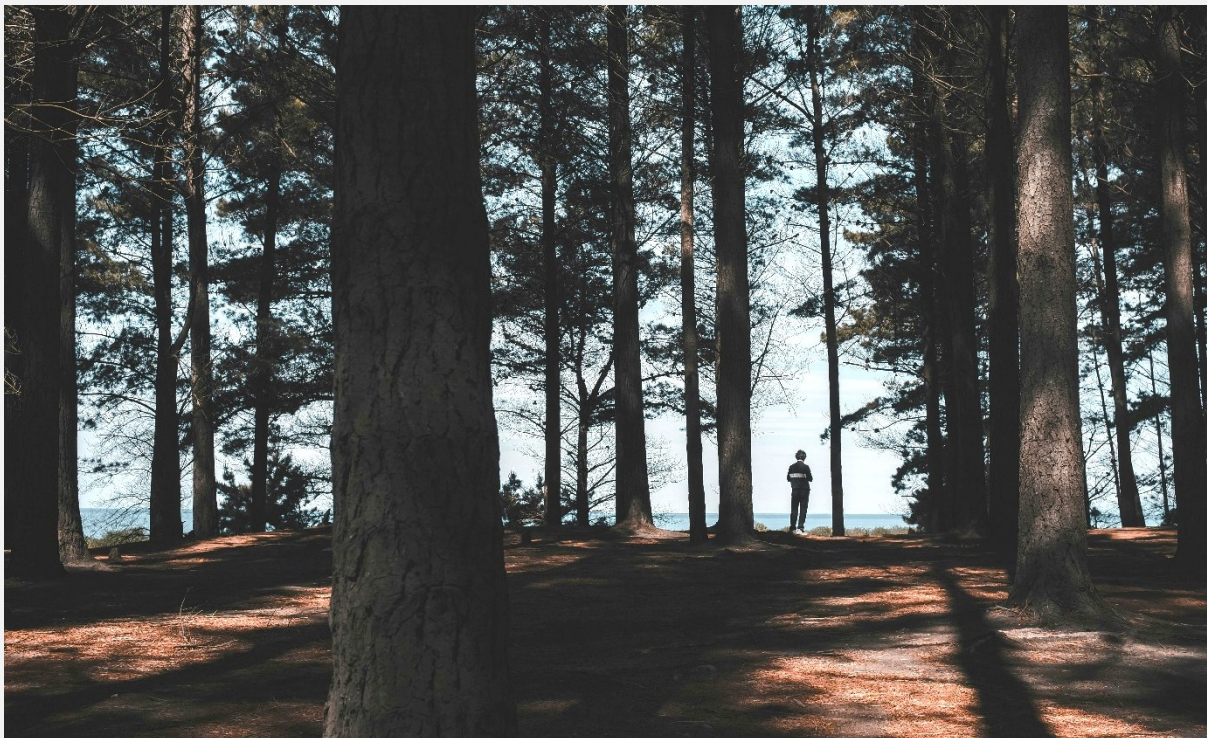
The Research and Innovation Team would also like to acknowledge Justin Puna, the winner of the Whitireia and WelTec Te Tohu Kairangi o Te Kōrari Rangahau award. Justin is a highly regarded kaimahi in Te Wānanga Māori and his iwi, helping educate and clean up after the devastation of Cyclone Gabrielle. Justin features in a video at [Te Au o Te Moana Conference 2023 | Maungaharuru-Tangitu hapū.](#)



Justin Puna and Leanne Iviil

Special Mentions

The Research & Innovation Team would like to cordially congratulate Leisha Williams and Windy Sione, two very talented kaimahi who have both recently completed their M.Prof.Prac. theses.



Ethics & Research Committee

Our Ethics and Research application forms and templates have recently been updated for usability and to include up-to-date School information. All references to Te Pūkenga have also been removed as it no longer exists as an entity. The Tutor Action Research Application has been revised to include Project Timeframe and Approvals Sections. The latest templates are available [here](#).

Date	Venue	Papers due
29 April 2026	Teams	15 April 2026
27 May 2026	Teams	13 May 2026
24 June 2026	Teams	10 June 2026
29 July 2026	Teams	15 July 2026
26 August 2026	Teams	12 August 2026
30 September 2026	Teams	16 September 2026
28 October 2026	Teams	14 October 2026
25 November 2026	Teams	11 November 2026

The Chair of the Ethics and Research Committee acknowledged the work of our external research active staff member Megan Allardice (EIT) for her five-year stint on the Committee. We wish her all the best in her post-EIT work and life generally.

The Ethics and Research Committee meet on the last Wednesday of the month. Applications are due the Wednesday two weeks prior. Please ensure that all sections of the application are completed and the application, research instruments and supporting documents are submitted as a single Word document. Resources to support you are available [here](#).



Research & Innovation Funding Committee

In 2025, the Research and Innovation Fund approved 19 applications from kaimahi. You can apply to the Research and Innovation Funding Committee for monies to buy out some of your teaching time for the purposes of research, or to have a research retreat for your Programme or School. The Research and Innovation Funding Committee meet in the last week of every month via e-meeting. Applications are due by the 15th of each month (or the next business day if this falls on a weekend). Please ensure that you complete all sections of the application and submit your application as a single Word document. If you need help with your Research and Innovation Funding application, please contact your Senior Research Advisor.

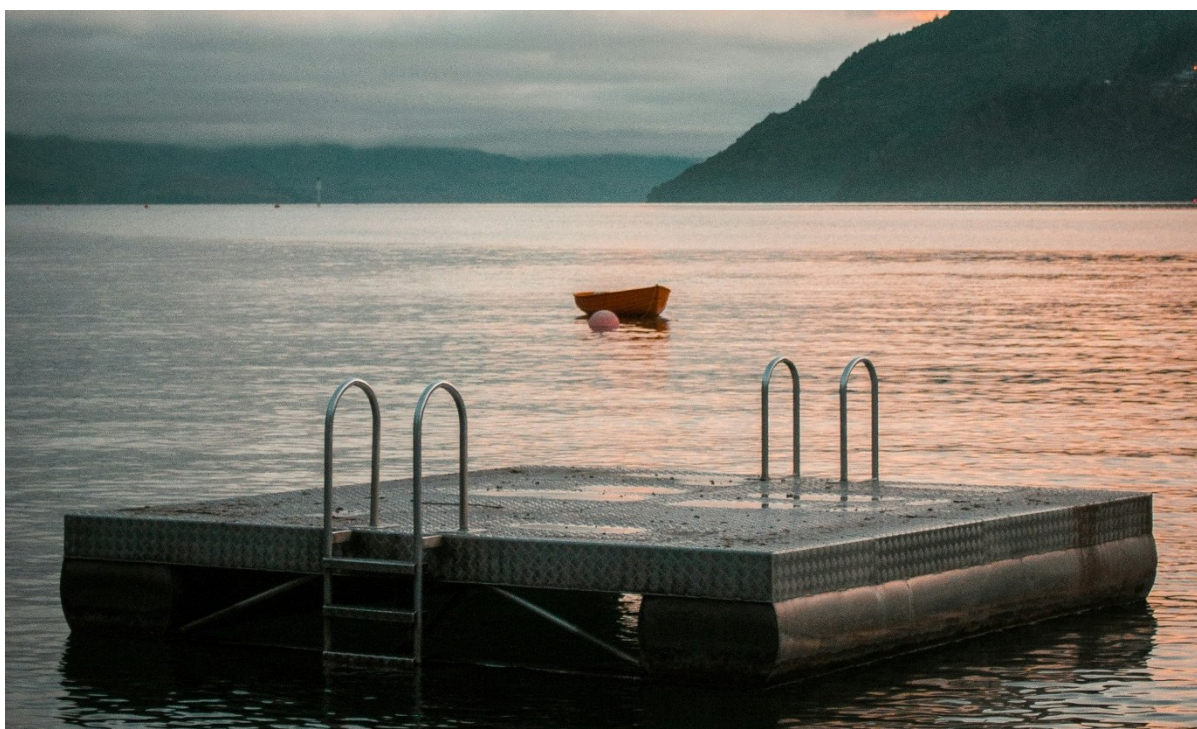


Your Research & Innovation Team

Your Whitireia and WelTec Research and Innovation Team are:

- Marie Merdan (Head of Academic Success),
- Lee Smith (Senior Research Advisor Health, Pacific Health and Social Practices and Te Wānanga Māori),
- Ahmed Al-Sa'di (Senior Research Advisor, Innovation Design and Technology), and
- Tessa McPhee (Lead Coordinator Academic Success Team, Secretary of the Research and Ethics Committee and the Research and Innovation Fund).

Do you have any suggestions for the Research and Innovation Team? If so, you can contact us [here](#). Remember, our job is to support you!



ROMS 2025

Health and Wellbeing

Enrolled Nursing

Dawn Bailey

Conference Contribution - Other

Davidson, A., Turner-Benny, P., Brake, H., & **Bailey, D.** 4 December. (2025). *The impact of digital device usage for non-course related purposes on ākonga engagement and learning in three undergraduate programmes*. Paper presented at Whitireia and WelTec Teaching and Research Hui, Porirua NZ.

Shona Urquhart

Conference Contribution – Other

Urquhart, S., & Wordsworth, A. 22 May. (2025). *30 Years of responding to the need for mental health and addiction nursing at Whitireia and WelTec*. Paper presented at 2025 Enrolled Nurse Section Conference 'Forging Forward for Enrolled Nurses', Wellington.

Bachelor of Nursing

Adrienne Cosslett

Conference Contribution - Other

Poot, A.S., **Cosslett, A.**, & Croom, K. 4 December. (2025). *How do Bachelor of Nursing ākonga want to learn?* Paper presented at Porirua, Teaching and Research Hui: Evolving Practice in Teaching and Research.

Anna Davidson

Conference Contribution - Other

Davidson, A.L., Turner-Benny, P., Brake, H., & Bailey, D. 4 12. (2025). *The impact of digital device usage for non course related purposes on ākonga engagement and learning in three undergraduate health programmes*. Paper presented at Teaching and research hui 2025: Evolving practice and teaching in research, Whitireia Porirua.

Anne-Sophie Poot

Conference Contribution - Other

Poot, A-S., Cosslett, A., & Croom, K. (2025). *How do Bachelor of Nursing ākonga want to learn?* Paper presented at Porirua, New Zealand, Teaching and Research hui 2025 Evolving practice in teaching & research.

Belinda McGrath

Conference Contribution - Other

Glarcher, M., Ramjan, L., Drury, P., **McGrath, B.**, Richards, G., Walters, C., & Salamonson, Y. 27 - 29 March. (2025). *Integrating artificial intelligence into nursing education: Perspectives of nurse educators on teaching, learning, and ethical approaches*. Paper presented at 15th European Biennial Conference of ACENDIO: eHealth, Artificial Intelligence & Nursing – Towards Precision Nursing in Research, Education and Practice, Rotterdam University of Applied Sciences, The Netherlands.

Journal article

Ramjan, L.M., Richards, G., Roach, D., **McGrath, B.**, Drury, P., Walters, C., Glarcher, M., Crawford, R., Wall, P., & Salamonson, Y. (2025). *Academic support strategies for nursing students with a disability at university: An integrative review*. *Collegian*, 32, 4. <http://doi.org/10.1016/j.colegn.2025.05.001>

Catherine Tuohy

Conference Contribution - Other

Minnoch, T., Ramaekers, S., Owen, K., Jones, S., & **Tuohy, C.** 4 December. (2025). *"I was in floods of tears, and a tutor said 'We have you. It's okay'". The role of kaiako support in ameliorating the impact of stress for ākonga in a Bachelor of Nursing Programme*. Paper presented at Whitireia & WelTec Teaching and Research Hui 2025: Evolving Practice in Teaching & Research | Whakawhanake whakaako, Whakawhanake haurapa, Porirua, NZ.

Owen, K., Jones, S., Ramaekers, S., Minnoch, T., & **Tuohy, C.** Thursday 30th October. (2025). *Juggling competing needs: Stressors experienced by nursing ākonga in Aotearoa New Zealand*. Paper presented at Council of Deans of Nursing and Midwifery (CDNM) 2025 Symposium; Empowering Nurses and Midwives: Action Towards a Healthier Future, Christchurch.

Journal article

Owen, K., Ramaekers, S., Jones, S., Minnoch, T., & Tuohy, C. (2025). *'I didn't realise that it would eat my life': Nursing students' accounts of clinical placements and the stressors associated with work-integrated learning. The Journal of Teaching and Learning for Graduate Employability*, 16, 1. pp.259-275.

Oral presentation

Owen, K., Tuohy, C., Jones, C., Ramaekers, S., & Minnoch, T. (2025). Factors affecting academic and clinical progress of ākonga in the Bachelor of Nursing Programme. Wellington. Nurse Education in the Tertiary Sector (NETS).

Report

Owen, K., Jones, S., Minnoch, T., Ramaekers, S., & Tuohy, C. (2025). *Factors affecting academic and clinical progress of ākonga in the Bachelor of Nursing Programme*. Porirua, New Zealand: Whitireia and WelTec.

Katherine Owen

Conference Contribution - Other

Collins, G., Tilly, T., & Owen, K. (2025). *"Bodies of knowledge: sharing space, learning and ways of knowing for a collaborative workforce"*. Paper presented at online, Service User in Academia Symposium.

Minnoch, T., Ramaekers, S., Owen, K., Jones, S., & Tuohy, C. 4 December. (2025). *"I was in floods of tears, and a tutor said 'We have you. It's okay'". The role of kaiako support in ameliorating the impact of stress for ākonga in a Bachelor of Nursing Programme*. Paper presented at Whitireia & WelTec Teaching and Research Hui 2025: Evolving Practice in Teaching & Research | Whakawhanake whakaako, Whakawhanake haurapa, Porirua, NZ.

Owen, K., Jones, S., Ramaekers, S., Minnoch, T., & Tuohy, C. Thursday 30th October. (2025). *Juggling competing needs: Stressors experienced by nursing ākonga in Aotearoa New Zealand*. Paper presented at Council of Deans of Nursing and Midwifery (CDNM) 2025 Symposium; Empowering Nurses and Midwives: Action Towards a Healthier Future, Christchurch.

Journal article

Owen, K., Ramaekers, S., Jones, S., Minnoch, T., & Tuohy, C. (2025). *'I didn't realise that it would eat my life': Nursing students' accounts of clinical placements and the stressors associated with work-integrated learning. The Journal of Teaching and Learning for Graduate Employability*, 16, 1. pp.259-275.

Oral presentation

Owen, K., Tuohy, C., Jones, C., Ramaekers, S., & Minnoch, T. (2025). Factors affecting academic and clinical progress of ākonga in the Bachelor of Nursing Programme. Wellington. Nurse Education in the Tertiary Sector (NETS).

Urquhart, S., Wordsworth, A., Owen, K., & White, M. (2025). Forging Forward: Undergraduate Education of Enrolled Nurses in Mental Health and Addictions. Forging Forward for Enrolled Nurses. Harbourside Function Centre, Wellington.

Report

Owen, K., Jones, S., Minnoch, T., Ramaekers, S., & Tuohy, C. (2025). *Factors affecting academic and clinical progress of ākonga in the Bachelor of Nursing Programme*. Porirua, New Zealand: Whitireia and Weltec.

Katie Croom

Conference Contribution - Other

Poot, A-S., Croom, K., & Cosslett, A. 4 12. (2025). *How do Bachelor of Nursing ākonga want to learn?*. Paper presented at Whitireia & WelTec Teaching and Research Hui 2025 - Evolving Practice in Teaching and Research, Whitireia, Porirua.

Croom, K.J. 4 12. (2025). *Management of Rodent Infestation in Hospital Settings: A Neglected Issue in International Public Health*. Paper presented at Whitireia & WelTec Teaching and Research Hui 2025 - Evolving Practice in Teaching and Research, Whitireia, Porirua.

Discussion/ Working Paper

Croom, K., Moloney, A., Fletcher, K., Kaforau, L., Harrington, R., & Mason, M. (2025). Global Review of Registered Nurse Scope of Practice: A Scoping Review Protocol.

Croom, Katie., Kaforau, Lydia., & Mason, Matt. (2025). Solomon Island Registered Nurses' Scope of Practice: Scoping Review Protocol.

Journal article

Croom, K., Kwaina, M., & Mason, M. (2025). *Rodent management issues in a Solomon Islands healthcare setting: an infection prevention and control response and preliminary findings*. *International Journal of Infection Control*, 21, <https://doi.org/10.3396/ijic.v21.23813>

Lauren Addington

Conference Contribution - Other

Addington, L., Smith, L., & Burke, R. 4 December. (2025). *How safe and inclusive are the nation's polytechnics for rainbow ākonga: Findings of a national vocational education study*. Paper presented at Whitireia & WelTec Teaching & Research Hui, Porirua.

Journal article

Smith, L., Burke, R., Kelsey, F., & **Addington, L.** (2025). *Co-opting the Rainbow: Analysis Malicious Survey Responses*. *Journal of Homosexuality*, 0, 0. pp.1-21. <https://doi.org/10.1080/00918369.2025.2540369>

Smith, L., Gremillion, H., Burke, R. S., Kelsey, F., & **Addington, L.** (2025). *Rainbow students' experiences in New Zealand's vocational education system: do they feel safe, included and supported?. Kōtuitui: New Zealand Journal of Social Sciences Online*, 20, 4. pp.699-716.

<https://doi.org/10.1080/1177083X.2024.2421266>

Petrina Turner-Benny

Conference Contribution - Other

Davidson, AL., **Turner-Benny, P.,** Brake, H., & Bailey, D. 4 12. (2025). *The impact of digital device usage for non course related purposes on ākonga engagement and learning in three undergraduate health programmes*. Paper presented at Teaching and research hui 2025: Evolving practice and teaching in research, Whitireia Porirua.

Sandra Jones

Conference Contribution - Other

Minnoch, T., Ramaekers, S., Owen, K., **Jones, S.,** & Tuohy, C. 4 December. (2025). *"I was in floods of tears, and a tutor said 'We have you. It's okay'". The role of kaiako support in ameliorating the impact of stress for ākonga in a Bachelor of Nursing Programme*. Paper presented at Whitireia & WelTec Teaching and Research Hui 2025: Evolving Practice in Teaching & Research | Whakawhanake whakaako, Whakawhanake haurapa, Porirua, NZ.

Owen, K., **Jones, S.,** Ramaekers, S., Minnoch, T., & Tuohy, C. Thursday 30th October. (2025). *Juggling competing needs: Stressors experienced by nursing ākonga in Aotearoa New Zealand*. Paper presented at Council of Deans of Nursing and Midwifery (CDNM) 2025 Symposium; Empowering Nurses and Midwives: Action Towards a Healthier Future, Christchurch.

Journal article

Owen, K., Ramaekers, S., **Jones, S.,** Minnoch, T., & Tuohy, C. (2025). *'I didn't realise that it would eat my life': Nursing students' accounts of clinical placements and the stressors associated with work-integrated learning*. *The Journal of Teaching and Learning for Graduate Employability*, 16, 1. pp.259-275.

Oral presentation

Owen, K., Tuohy, C., **Jones, C.,** Ramaekers, S., & Minnoch, T. (2025). Factors affecting academic and clinical progress of ākonga in the Bachelor of Nursing Programme. Wellington. Nurse Education in the Tertiary Sector (NETS).

Report

Owen, K., **Jones, S.,** Minnoch, T., Ramaekers, S., & Tuohy, C. (2025). *Factors affecting academic and clinical progress of ākonga in the Bachelor of Nursing Programme*. Porirua, New Zealand: Whitireia and WelTec.

Shivann Ramaekers

Conference Contribution - Other

Minnoch, T., **Ramaekers, S.,** Owen, K., Jones, S., & Tuohy, C. 4 December. (2025). *"I was in floods of tears, and a tutor said 'We have you. It's okay'". The role of kaiako support in ameliorating the impact of stress for ākonga in a Bachelor of Nursing Programme*. Paper presented at Whitireia & WelTec Teaching and Research Hui 2025: Evolving Practice in Teaching & Research | Whakawhanake whakaako, Whakawhanake haurapa, Porirua, NZ.

Owen, K., Jones, S., **Ramaekers, S.,** Minnoch, T., & Tuohy, C. Thursday 30th October. (2025). *Juggling competing needs: Stressors experienced by nursing ākonga in Aotearoa New Zealand*. Paper presented at Council of Deans of Nursing and Midwifery (CDNM) 2025 Symposium; Empowering Nurses and Midwives: Action Towards a Healthier Future, Christchurch.

Conference contribution - Published

Ramaekers, S., & Rook, H. (2025). *Exploring joy in nursing practice in Aotearoa New Zealand.* International Council of Nurses Congress

Discussion/ Working Paper

Ramaekers, S., & Rook, H. (2025). There is joy in nursing, and we want to find it!. Kaitiaki Nursing New Zealand. <https://kaitiaki.org.nz/>.

Oral presentation

Owen, K., Tuohy, C., Jones, C., **Ramaekers, S.,** & Minnoch, T. (2025). Factors affecting academic and clinical progress of ākonga in the Bachelor of Nursing Programme. Wellington. Nurse Education in the Tertiary Sector (NETS).

Journal article

Owen, K., **Ramaekers, S.,** Jones, S., Minnoch, T., & Tuohy, C. (2025). *'I didn't realise that it would eat my life': Nursing students' accounts of clinical placements and the stressors associated with work-integrated learning.* *The Journal of Teaching and Learning for Graduate Employability*, 16, 1. pp.259-275.

Report

Owen, K., Jones, S., Minnoch, T., Ramaekers, S., & Tuohy, C. (2025). *Factors affecting academic and clinical progress of ākonga in the Bachelor of Nursing Programme.* Porirua, New Zealand: Whitireia and WelTec.

Tia Minnoch

Conference Contribution - Other

Minnoch, T., Ramaekers, S., Owen, K., Jones, S., & Tuohy, C. 4 December. (2025). *"I was in floods of tears, and a tutor said 'We have you. It's okay'". The role of kaiako support in ameliorating the impact of stress for ākonga in a Bachelor of Nursing Programme.* Paper presented at Whitireia & WelTec Teaching and Research Hui 2025: Evolving Practice in Teaching & Research | Whakawhanake whakaako, Whakawhanake haurapa, Porirua, NZ.

Owen, K., Jones, S., Ramaekers, S., **Minnoch, T.,** & Tuohy, C. Thursday 30th October. (2025). *Juggling competing needs: Stressors experienced by nursing ākonga in Aotearoa New Zealand.* Paper presented at Council of Deans of Nursing and Midwifery (CDNM) 2025 Symposium; Empowering Nurses and Midwives: Action Towards a Healthier Future, Christchurch.

Oral presentation

Owen, K., Tuohy, C., Jones, C., Ramaekers, S., & **Minnoch, T.** (2025). Factors affecting academic and clinical progress of ākonga in the Bachelor of Nursing Programme. Wellington. Nurse Education in the Tertiary Sector (NETS).

Journal article

Owen, K., Ramaekers, S., Jones, S., **Minnoch, T.,** & Tuohy, C. (2025). *'I didn't realise that it would eat my life': Nursing students' accounts of clinical placements and the stressors associated with work-integrated learning.* *The Journal of Teaching and Learning for Graduate Employability*, 16, 1. pp.259-275.

Report

Owen, K., Jones, S., **Minnoch, T.,** Ramaekers, S., & Tuohy, C. (2025). *Factors affecting academic and clinical progress of ākonga in the Bachelor of Nursing Programme.* Porirua, New Zealand: Whitireia and WelTec.

Clinical Laboratory Unit

Shelley Winters

Journal article

Price, A., & Winters, S. (2025). *Simulation based learning in social work education.* *Whitireia Journal of Nursing, Health and Social Services*, 32, pp.43 - 47. <https://doi.org/10.34074/whit.3203>

Alexandra Wordsworth

Conference Contribution – Other

Urquhart, S., & Wordsworth, A. 22 May. (2025). *30 Years of responding to the need for mental health and addiction nursing at Whitireia and WelTec.* Paper presented at 2025 Enrolled Nurse Section Conference 'Forging Forward for Enrolled Nurses', Wellington.

New Zealand Certificate in Health and Wellbeing

Georgia Collins

Conference Contribution - Other

Collins, G., Tilly, T., & Owen, K. (2025). *"Bodies of knowledge: sharing space, learning and ways of knowing for a collaborative workforce"*. Paper presented at online, Service User in Academia Symposium.

Ranui, A., Collins, G., & Rangihuna, T. 4 12. (2025). *Insights gathering: Recommendations from the peer support and health care workforce*. Paper presented at Teaching and Research hui 2025; Evolving practice in teaching research, Porirua.

Report

Ranui, A., Collins, G., & Rangihuna, T. (2025). *Insights gathering: Recommendations from the peer support and healthcare workforce*. Wellington, NZ: Te Whatu Ora: MHAIDS.

Tristine Tilly

Conference Contribution - Other

Collins, G., Tilly, T., & Owen, K. (2025). *"Bodies of knowledge: sharing space, learning and ways of knowing for a collaborative workforce"*. Paper presented at online, Service User in Academia Symposium.

Health Science Paramedic

Vicky Field

Conference Contribution - Other

Field, V. 4 December. (2025). *Blood, Sweat, and Tears: Cisgender Women on the Frontline*. Paper presented at Whitireia & WelTec Teaching & Research Hui, Porirua, NZ.

Hazel Brake

Conference Contribution - Other

Davidson, AL., Turner-Benny, P., Brake, H., & Bailey, D. 4 12. (2025). *The impact of digital device usage for non course related purposes on ākonga engagement and learning in three undergraduate health programmes*. Paper presented at Teaching and research hui 2025: Evolving practice and teaching in research, Whitireia Porirua.

Reuben Corlett

Conference Contribution - Other

Corlett, R. 4 December. (2025). *Consent legislation and suicidality in the prehospital setting*. Paper presented at Whitireia & WelTec Teaching & Research Hui, Porirua.

PGC Nursing

Tane Rangihuna

Conference Contribution - Other

Ranui, A., Collins, G., & Rangihuna, T. 4 12. (2025). *Insights gathering: Recommendations from the peer support and health care workforce*. Paper presented at Teaching and Research hui 2025; Evolving practice in teaching research, Porirua.

Journal article

Smith, L., Heyward, T., Arcus, K., Hargaden, M., Fuller, C., & Rangihuna, T. (2025). *Moral Injury in Nurses New to Mental Health: An Exploratory New Zealand Study*. *Issues in Mental Health Nursing*, 46, 5. pp.481-488. doi:<https://doi.org/10.1080/01612840.2025.2475355>

Report

Ranui, A., Collins, G., & Rangihuna, T. (2025). *Insights gathering: Recommendations from the peer support and healthcare workforce*. Wellington, NZ: Te Whatu Ora: MHAIDS.

Abbie Ranui

Conference Contribution - Other

Ranui, A., Collins, G., & Rangihuna, T. 4 12. (2025). *Insights gathering: Recommendations from the peer support and health care workforce*. Paper presented at Teaching and Research hui 2025; Evolving practice in teaching research, Porirua.

Report

Ranui, A., Collins, G., & Rangihuna, T. (2025). *Insights Gathering: Recommendations from the peer support and healthcare workforce*. Wellington, NZ: Te Whatu Ora: MHAIDS.

Mel Hargaden

Journal article

Smith, L., Heyward, T., Arcus, K., Hargaden, M., & Fuller, C. (2025). *Moral Injury in Nurses New to Mental Health: An Exploratory New Zealand Study*. *Issues in Mental Health Nursing*, 46, 5. pp.481-488. <https://doi.org/10.1080/01612840.2025.2475355>

De'arna Sculley

Conference Contribution - Other

Sculley, De'arna., & Trimmer, Wendy. 4 December. (2025). *How has colonisation and intergenerational trauma shaped health outcomes for Māori in forensic mental health care?*. Paper presented at Whitireia and Weltec teaching and research hui, Porirua.

PostGrad Specialty Care

Catherine Fuller

Conference Contribution - Other

Catherine, Fuller., Lee, Smith., Tony, Heyward., & Tane, Rangihuna. 4 December. (2025). *The Findings of an Exploratory Study Undertaken to Understand the Experience of Moral Injury in New Graduate Nurses Working in Mental Health, Addiction & Disability Clinical Areas in New Zealand*. Paper presented at Whitireia & WelTec Teaching and Research Hui 2025 | Evolving Practice in Teaching & Research | Whakawhanake whakaako, Whakawhanake haurapa, Porirua.

Journal article

Smith, L., Heyward, T., Arcus, K., Hargaden, M., & **Fuller, C.** (2025). *Moral Injury in Nurses New to Mental Health: An Exploratory New Zealand Study*. *Issues in Mental Health Nursing*, 46, 5. pp.481-488. <https://doi.org/10.1080/01612840.2025.2475355>

Other Form of Assessable Output

Fuller, Catherine., & Smith, Lee. (2025). *Whitireia's 2025 Journal of Nursing Out Now*. Kaitiaki Nursing New Zealand, New Zealand. Kaitiaki Nursing New Zealand.

Innovation, Design and Technology

Bachelor of Creative Technologies

Alice Moore

Conference Contribution - Other

Saris, B., & **Moore, A.** 4 December. (2025). *Bridging Pedagogies: The complexities of teaching design courses in China*. Paper presented at Research Hui | Evolving Practice in Teaching and Research | Whakawhanake whakaako, Whakawhanake haurapa, Whitireia & WelTec.

Brenda Saris

Conference Contribution - Other

Vos, Marta., Hu, Minjie., **Saris, Brenda.**, Poudyal, Chandra., Moses, Thelma., Assadi, Tony., Baliuag, Chalinor., Arado, Maria Eda., Thammadi, Swetha., Puri, Swati., de Silva, Anjali., Domdom, Joey., Smith, Lee., Tallon, Rachel., Rahman, Shan., Chen, Guoyang., Panjabi, Richa., & Krishan, Gopal. 4 December. (2025). *AI Tools for Researchers: Co-constructing a framework for assessing AI research support tools*. Paper presented at W & W Research Symposium, Wellington.

Saris, B. L., & Moore, A. K. 4 Dec. (2025). *Bridging pedagogies: Western design educators and the complexities of teaching in China*. Paper presented at Whakawhanake whakaako, whakawhanake haurapa (Teaching and Research Hui 2025), Whitireia Porirua.

Smith, L., & **Saris, B.** 14 May. (2025). *The promise of photo-elicitation in creative and performing arts research*. Paper presented at International Congress of Qualitative Inquiry, Urbana Champaign, Illinois USA (online).

Journal article

Smith, L., **Saris, B.**, Hull, N., Sullivan, D., Marshall, K., Nichols, B., & Maddock, E. (2025). *Creative and Performing Arts Educators Visual Reflect on the Factors that Impact on their Work/Life Balance*. *New Zealand Journal of Educational Studies*, TBC, TBC. pp.TBC. <https://doi.org/10.1007/s40841-025-00389-z>

Nikko Hull

Journal article

Smith, L., Saris, B., **Hull, N.**, Sullivan, D., Marshall, K., Nichols, B., & Maddock, E. (2025). *Creative and Performing Arts Educators Visual Reflect on the Factors that Impact on their Work/Life Balance*. *New*

Bachelor of Eng Tech

Gopal Krishan

Journal article

Joshi, Tanuj., Parkash, O.M., Kristoffer B Gallegos, Ralph., & **Krishan, Gopal.** (2025). *Comparative investigation of the energy consumption and heat transfer characteristics of Uni-modal and Bi-modal slurry flow through a straight pipe.* *Ocean engineering*, 316, pp.119987.

Joshi, Tanuj., Parkash, Om., Kristoffer B Gallegos, Ralph., & **Krishan, Gopal.** (2025). *Computational Analysis of Pipe Roughness Influence on Slurry Flow Dynamics.* *Computation*, 13, 3. pp.65.
<https://doi.org/10.3390/computation13030065>

Business Programmes

Olkan Guler

Conference Contribution - Other

Guler, O. 27-28 November. (2025). *The Adaptability and Resilience of Management Accountants in An Increasingly Unpredictable World.* Paper presented at New Zealand Management Accounting, Canterbury University, Christchurch.

Swati Puri

Conference Contribution - Other

Puri, S.K., Panjabi, R., & Al-Sadi, A. October. (2025). *Trust, Negotiation, and Skill Acquisition in Social Commerce: Evidence from Facebook Marketplace.* Paper presented at 6th International Conference on Data Analytics, University of Bahrain, IEEE Bahrain Chapter, Bahrain.

Conference contribution - Published

Puri, S.K., Rahman, S., & Yadav, J. (2025). *Building Customer Trust in Carbon Markets: The Role of AI and Blockchain.* AIOT Global Summit 2025: Economic Growth, 15–16 July (pp. 29–34). ePress, Unitec.
<https://doi.org/10.34074/proc.250106>.

Thesis

Kumaria, S.K. (2025). *Essays on Corporate Finance* Massey University, New Zealand.

Oral presentation

Puri, S.K. (2025). Building Customer Trust in Carbon Markets. Auckland. AIOT Global Summit: Economic Growth.

Puri, S.K. (2025). Fostering Sustainability in New Zealand: An Empirical Analysis of the Impact of ESG on Carbon Emissions. India. Symbiosis Institute of Business Management, Hyderabad.

Puri, S.K. (2025). Impact of IBC on Corporate Borrowings- An Indian perspective. Otago Business School, University of Otago, Dunedin. New Zealand Finance Colloquium.

Puri, S.K., Panjabi, R., & Al-sadi, A. (2025). Mapping the Emotional Landscape of Peer-to-Peer Commerce. Bahrain. 6th International Conference on Data Analytics, University of Bahrain, IEEE Bahrain Chapter.

Yi-Mei Huang

Conference Contribution - Other

Yi-Mei, Huang. (2025). *A Knowledge Management Strategy for Connecting Organisational Growth with Learning Futures.* Paper presented at New Zealand Association for Research in Education, Auckland, New Zealand.

Huang, Yi-Mei. (2025). *A Systematic Review of Knowledge Management Strategies for Organizational Performance.* Paper presented at Annual iFAIR 2025 Conference, Kuala Lumpur, Malaysia.

Shan Abdur Rahman

Conference contribution - Published

Rahman, S., Puri, S., & Yadav, J. (2025). *Building Customer Trust in Carbon Markets: The Role of AI and Blockchain.* Rahman, S., Puri, S. K., & Yadav, J. (2025). Building Customer Trust is. Varastehpour & M. Shakiba (Ed.), AIOT Global Summit 2025: Economic Growth. ePress, Unitec. (pp.29–34).
<https://doi.org/10.34074/proc.250106>.

Journal article

Tarek Amer, N., **Rahman, S.,** Baker, J., & Ashill, N J. (2025). *From the Internet Dilemma to the Metaverse Dilemma: Exploring Luxury Brands' Adoption of Metaverse Technologies.* *Communications of the Association for Information Systems*, 57, pp.1242-1269. [dhttps://doi.org/10.17705/1CAIS.05754](https://doi.org/10.17705/1CAIS.05754)

Oral presentation

Rahman, S., Ashill, N., & Kadirov, D. (2025). Expression of Charisma in Luxury Brand Storytelling: Advancing Research Through Qualitative Comparative Analysis. Wellington. Research Hui 2025. Whitireia and WelTec.

Thesis

Rahman, S. (2025). *The Art of Selling Dreams: The Expression of Charisma and Longevity in Luxury Brand Storytelling* Victoria University of Wellington, Wellington, New Zealand.

Information Tech Program

Steven McKinlay

Chapter in Book

McKinlay, S. (2025). Fallible Machines: The myth of foundationalism in an algorithmic age. In AI and Democracy (Eds.), (pp.1-13). Edinburgh University Press.

Conference Contribution - Other

McKinlay, S. July. (2025). *Beyond Representation: A Philosophy for Understanding Large Language Models*. Paper presented at International Association of Computing and Philosophy, University of Twente.

Marta Vos

Conference Contribution - Other

Vos, Marta., Hu, Minjie., Saris, Brenda., Poudyal, Chandra., Moses, Thelma., Assadi, Tony., Baliuag, Chalinor., Arado, Maria Eda., Thammadi, Swetha., Puri, Swati., de Silva, Anjali., Domdom, Joey., Smith, Lee., Tallon, Rachel., Rahman, Shan., Chen, Guoyang., Panjabi, Richa., & Krishan, Gopal. 4 December. (2025). *AI Tools for Researchers: Co-constructing a framework for assessing AI research support tools*. Paper presented at W & W Research Symposium, Wellington.

Richa Panjabi

Conference Contribution - Other

Panjabi, Richa., AL-Sa'di, Ahmed., K Puri, & Swati. 29th - 30th October. (2025). *Tracing the Emotional Pathways of Facebook Marketplace*. Paper presented at 6th International Conference on Data Analytics for Business and Industry (ICDABI), Virtual Presentation at University of Bahrain.

Panjabi, Richa., AL-Sa'di, Ahmed., & K Puri, Swati. 29th - 30th October. (2025). *Trust, Negotiation, and Skill Acquisition in Social Commerce: Evidence from Facebook Marketplace*. Paper presented at 6th International Conference on Data Analytics for Business and Industry (ICDABI), Virtual Presentation at University of Bahrain.

Manish Singh

Journal article

Singh, Manish., Groves, Lindsay., & Marshall, Stuart. (2025). *Formal verification of a lock-free relaxed balanced BST. (to be submitted Dec 2024). concurrency and computation practice and experience, n/a,*

Thesis

Singh, Manish. (2025). *Non-blocking search structures (to be completed)* Victoria University of Wellington, Wellington, New Zealand.

Minjie Hu

Oral presentation

Vos, Marta., Hu, Minjie., Saris, Brenda., Poudyal, Chandra., Moses, Thelma., Assadi, Tony., Baliuag, Chalinor., Arado, Maria Eda., Thammadi, Swetha., Puri, Swati., de Silva, Anjali., Domdom, Joey., Smith, Lee., Tallon, Rachel., Rahman, Shan., Chen, Guoyang., Panjabi, Richa., & Krishan, Gopal. 4 December. (2025). *AI Tools for Researchers: Co-constructing a framework for assessing AI research support tools*. Paper presented at W & W Research Symposium, Wellington.

Hu, M. (2025). Blended Learning in Teaching Novices Computer Programming. Whitireia Campus, Wellington. Whitireia & WelTec Teaching & Research Hui 2025.

Grudina, G., & **Hu, M.** (2025). The Role of AI Tools in IT Tertiary Education: A Systematic Literature Review. W. Whitireia & WelTec Teaching & Research Hui 2025.

Grudina, G., & **Hu, M.** (2025). The Role of Artificial Intelligence Tools for Teaching and Learning Information Technology and Computing in Tertiary Education: A Systematic Literature Review. Auckland, NZ. The New Zealand Association for Research in Education (NZARE) 2025 Conference, 18th to 20th November.

Anjali de Silva

Conference contribution - Published

de Silva, A., Chen, G., Ma, H., Nekooei, S. M., & Zuo, X. (2025). *Advancing Community Detection with Graph Convolutional Neural Networks: Bridging Topological and Attributive Cohesion*. Thirty-Fourth International Joint Conference on Artificial Intelligence (pp.7383-7391). 10.24963/ijcai.2025/821.

Journal article

de Silva, A., Chen, G., Ma, H., & Nekooei, S. M. (2025). *EIGA: A Novel Genetic Algorithm Based on Edge Information for Community Detection in Weighted Social Networks*. *IEEE Transactions on Knowledge and Data Engineering*, 38, 1. pp.276 - 289. doi:10.1109/TKDE.2025.3619494

Professional Practice

Wendy Trimmer

Conference Contribution - Other

Sculley, De'arna., & **Trimmer, Wendy**. 4 December. (2025). *How has colonisation and intergenerational trauma shaped health outcomes for Māori in forensic mental health care?*. Paper presented at Whitireia and WelTec teaching and research hui, Porirua.

Joey Domdom

Journal article

Foronda, C., Smith, L., Murray, J., & **Domdom, J.** (2025). *Four First in Family Students' Transition into Degree Study at a Vocational Education Institution*. *New Zealand Journal of Education Studies*, 60, pp.189-204.

Oral presentation

Vos, M., Hu, M., Saris, B., Poudyal, C., Asadi, T., Baliuag, C., Arado, M., Thammadi, S., Puri, S., de Silva, A., **Domdom, J.**, Smith, L., Tallon, R., Rahman, S., Chen, G., Panjabi, R., & Gopal, K. (2025). *AI Tools for Researchers and a Framework for Assessing Them*. Porirua. Teaching & Research Hui 2025: Evolving Practice in Teaching & Research.

Tallon, R., Maskey, S., & Domdom, J. (2025). *Home Feeds Amidst Host Culture: Social Media and the Integration of International Students*. Porirua. Teaching & Research Hui 2025: Evolving Practice in Teaching & Research.

Rachel Tallon

Journal article

Tallon, R A M. (2025). *Unpacking deviance during the COVID-19 pandemic: Reflections from a personal and sociological perspective*. *Whitireia Journal of Nursing, Health and Social Services*, 32, pp.57-66. doi:https://doi.org/10.34074/whit.3205

Sanam Maskey

Conference Contribution - Other

Maskey, Sanam. 23-27 November. (2025). *Ruptures in relationships: Implications of neoliberalism in education on Indigenous communities in Nepal*. Paper presented at Oceania Comparative and International Education Society (OCIES) Conference, University of Canterbury, Christchurch.

Thesis

Maskey, Sanam. (2025). *Intergenerational Transfer of Indigenous Knowledge by Newar Women in Khokana, Nepal* Te Herenga Waka - Victoria University of Wellington, Wellington, New Zealand.

The Built Environment

Swetha Thammadi

Journal article

Singh, Simron., Hossain, Mehnaz., Clayton, C. A., Fekete, Alexander., Thammadi, Swetha, Fishman, Tomer., Gooroochurn, M., & Haberl, H. (2025). Infrastructure, Risk, and Resilience on Small Island Developing States (SIDS): Navigating the Nexus. Part 1: Conceptual Foundations.

Pacific Health and Social Practice

Bachelor of Nursing Pacific

Tania Mullane

Conference Contribution - Other

Mullane, T., Smith, M., Smith, L., Blaikie, C., & Mitaera, J. 4 December. (2025). *Evaluation of a pilot study incorporating an oral health module into the Bachelor of Nursing Pacific curriculum* |. Paper presented at Whitireia & WelTec Teaching & Research Hui, Porirua.

Koperu, S., **Mullane, T.**, & Pool. 5 December. (2025). *Mai I Te Whenua Mai I Te Moana*. Paper presented at Whitireia & WelTec Teaching & Research Hui, Porirua.

Journal article

Enright, R., Roskvist, R., Rahiri, J-L., **Mullane, T.**, Albert, B. B., Satokar, V. V., & Harwood, M. (2025). *Experiences of Māori and Pacific women recruited into a pregnancy clinical trial in Aotearoa, New Zealand: a Kaupapa Māori qualitative study*. *BMJ Open*, 15, pp.e089542. doi:<https://doi.org/10.1136/bmjopen-2024-089542>

Teramira Schutz

Conference Contribution - Other

Schutz, T., Silverman, P., Renor, C., Thomson, C., Whitford, M., Isaako-Toloo, L., Tasi, L.-L., Bowen, R., & Bailey, J. 4 December. (2025). *Teaching-learning approaches for bioscience in nursing: Do they relate to students' motivation and study success?*. Paper presented at Whitireia & WelTec Teaching & Research Hui, Porirua.

Phillip Silverman

Conference Contribution - Other

Schutz, T., **Silverman, P.**, Renor, C., Thomson, C., Whitford, M., Isaako-Toloo, L., Tasi, L.-L., Bowen, R., & Bailey, J. 4 December. (2025). *Teaching-learning approaches for bioscience in nursing: Do they relate to students' motivation and study success?*. Paper presented at Whitireia & WelTec Teaching & Research Hui, Porirua.

Loha Isaako-Toloo

Conference Contribution - Other

Schutz, T., Silverman, P., Renor, C., Thomson, C., Whitford, M., **Isaako-Toloo, L.**, Tasi, L.-L., Bowen, R., & Bailey, J. 4 December. (2025). *Teaching-learning approaches for bioscience in nursing: Do they relate to students' motivation and study success?*. Paper presented at Whitireia & WelTec Teaching & Research Hui, Porirua.

Christina Thomson

Conference Contribution - Other

Schutz, T., Silverman, P., Renor, C., **Thomson, C.**, Whitford, M., Isaako-Toloo, L., Tasi, L.-L., Bowen, R., & Bailey, J. 4 December. (2025). *Teaching-learning approaches for bioscience in nursing: Do they relate to students' motivation and study success?*. Paper presented at Whitireia & WelTec Teaching & Research Hui, Porirua.

Claire Renor

Conference Contribution - Other

Schutz, T., Silverman, P., **Renor, C.**, Thomson, C., Whitford, M., Isaako-Toloo, L., Tasi, L.-L., Bowen, R., & Bailey, J. 4 December. (2025). *Teaching-learning approaches for bioscience in nursing: Do they relate to students' motivation and study success?*. Paper presented at Whitireia & WelTec Teaching & Research Hui, Porirua.

Loma-Linda Tasi

Conference Contribution - Other

Tasi, T, L-L, L., Iupeli, R., Ward, E., Skelton, R., Robinson, B., Te Moana, D., Barrett, E., Luke, D., Gemmell, Y., Harris, B., Whitiker-Atkins, M., Carr, T., Bishop, T., Bishop, E., Pantidi, N., & Hales, C. 4 12. (2025). *Integrating Pacific research methods in the development of a virtual reality (VR) platform to support bariatric care education*. Paper presented at Whitireia & WelTec Teaching & Research Hui, Porirua.

Tasi, T.L.L., Ulloa, M., & Su'a-Tavila, A. 4 12. (2025). *Pacific nursing students and their experiences with mentoring support*. Paper presented at Whitireia & WelTec Teaching & Research Hui, Porirua.

Schutz, T., Silverman, P., Renor, C., Thomson, C., Whitford, M., Isaako-Toloo, L., **Tasi, L.-L.**, Bowen, R., & Bailey, J. 4 December. (2025). *Teaching-learning approaches for bioscience in nursing: Do they relate to*

students' motivation and study success?. Paper presented at Whitireia & WelTec Teaching & Research Hui, Porirua.

Tasi, T.L.L. 23-26 November. (2025). *The mentoring experiences of Pacific student nurses*. Paper presented at Oceania Comparative International Education Society, Christchurch.

Miikana Whitford

Conference Contribution - Other

Schutz, T., Silverman, P., Renor, C., Thomson, C., **Whitford, M.**, Isaako-Tolosa, L., Tasi, L.-L., Bowen, R., & Bailey, J. 4 December. (2025). *Teaching-learning approaches for bioscience in nursing: Do they relate to students' motivation and study success?* Paper presented at Whitireia & WelTec Teaching & Research Hui, Porirua.

Rachael Bowen

Conference Contribution - Other

Schutz, T., Silverman, P., Renor, C., Thomson, C., Whitford, M., Isaako-Tolosa, L., Tasi, L.-L., **Bowen, R.**, & Bailey, J. 4 December. (2025). *Teaching-learning approaches for bioscience in nursing: Do they relate to students' motivation and study success?*. Paper presented at Whitireia & WelTec Teaching & Research Hui, Porirua.

Tracy Narbey

Conference Contribution - Other

Narbey, T. 4 December. (2025). *Te ako whakaruruhau ā ahurea An autoethnographic exploration of culturally responsive teaching practice*. Paper presented at Whitireia & WelTec Teaching & Research Hui, Porirua, NZ.

Bachelor of Social Work

Dominika Zmuda

Conference Contribution - Other

Matthews, H., & **Zmuda, D.** 4 December. (2025). *Interpreting Competence in Social Work Practice with Ethnic and Cultural Groups in Aotearoa New Zealand*. Paper presented at Whitireia & WelTec Teaching & Research Hui, Porirua, NZ.

Hawa Matthews

Conference Contribution - Other

Matthews, H., & Zmuda, D. 4 December. (2025). *Interpreting Competence in Social Work Practice with Ethnic and Cultural Groups in Aotearoa New Zealand*. Paper presented at Whitireia & WelTec Teaching & Research Hui, Porirua, NZ.

Ashleigh Price

Journal article

Price, A., & **Winters, S.** (2025). *Simulation based learning in social work education*. *Whitireia Journal of Nursing, Health and Social Services*, 32, pp.43 - 47. doi:<https://doi.org/10.34074/whit.3203>

Director Teaching and Learning

Conference Contribution - Other

Jean Mitaera

Mullane, T., Smith, M., Smith, L., Blaikie, C., & **Mitaera, J.** 4 December. (2025). *Evaluation of a pilot study incorporating an oral health module into the Bachelor of Nursing Pacific curriculum*. Paper presented at Whitireia & WelTec Teaching & Research Hui, Porirua.

Te Wānanga Māori

Bachelor of Nursing Māori

Trudy Scott

Conference Contribution - Other

Scott, T. D., & McGhie, M. E. 4 12. (2025). *Asking the right pātai: Embracing what you don't know and how to fix it*. Paper presented at Whitireia & WelTec Teaching and Research Hui, Porirua.

Waayer, S., Peterson, J., Scott, T., & McGhie, M. 4 December. (2025). *SMARTETLA Revisited: Evidence-Based Nursing Education Ten Years On*. Paper presented at Whitireia & WelTec Teaching & Research Hui, Porirua.

Gerrard, M., McGhie, M., Bishop, J., Grace, J., Koperu, S., Laracy, K., Iraia, K., Waayer, S., **Scott, T.**, Rikihana, M., & Tuioti, M. 4 12. (2025). *Whāia te mea ngaro - Relevant to my realities*. Paper presented at Whitireia & WelTec Teaching research hui, Porirua.

Moana Tuioti

Conference Contribution - Other

Tuioti, M., & Koperu, S. 5 December. (2025). *Kaupapa Kōrero converges with OSC[AR]E*. Paper presented at Whitireia & WelTec Teaching & Research Hui, Porirua.

Michelle McGhie

Conference Contribution - Other

Scott, T., & **McGhie, M.** 04 12. (2025). *Asking the right patai Embracing what you don't know and how to fix it*. Paper presented at Whitireia and WelTec teaching and research hui, Porirua.

Jasmine Petersen

Conference Contribution - Other

Waayer, S., **Peterson, J.**, Scott, T., & McGhie, M. 4 December. (2025). *SMARTETLA Revisited: Evidence-Based Nursing Education Ten Years On*. Paper presented at Whitireia & WelTec Teaching & Research Hui, Porirua.

Jodi Bishop

Conference Contribution - Other

Gerrard, M., McGhie, M., **Bishop, J.**, Grace, J., Koperu, S., Laracy, K., Iraia, K., Waayer, S., Scott, T., Rikihana, M., & Tuioti, M. 4 12. (2025). *Whāia te mea ngaro - Relevant to my realities*. Paper presented at Whitireia & WelTec Teaching research hui, Porirua.

Kare Iraia

Conference Contribution - Other

Gerrard, M., McGhie, M., Bishop, J., Grace, J., Koperu, S., Laracy, K., **Iraia, K.**, Waayer, S., Scott, T., Rikihana, M., & Tuioti, M. 4 12. (2025). *Whāia te mea ngaro - Relevant to my realities*. Paper presented at Whitireia & WelTec Teaching research hui, Porirua.

Kay Laracy

Conference Contribution - Other

Koperu, S., Tipene, D., & **Laracy, K.** 4 December. (2025). *Kawa Whakaruruhau Te Rito o te Harakeke*. Paper presented at Whitireia & WelTec Teaching & Research Hui, Porirua.

Gerrard, M., McGhie, M., Bishop, J., Grace, J., Koperu, S., **Laracy, K.**, Iraia, K., Waayer, S., Scott, T., Rikihana, M., & Tuioti, M. 4 12. (2025). *Whāia te mea ngaro - Relevant to my realities*. Paper presented at Whitireia & Weltec Teaching research hui, Porirua.

Mereruia Rikihana

Conference Contribution - Other

Gerrard, M., McGhie, M., Bishop, J., Grace, J., Koperu, S., Laracy, K., Iraia, K., Waayer, S., Scott, T., **Rikihana, M.**, & Tuioti, M. 4 12. (2025). *Whāia te mea ngaro - Relevant to my realities*. Paper presented at Whitireia & WelTec Teaching research hui, Porirua.

Sandra Waayer

Conference Contribution - Other

Waayer, S., Peterson, J., Scott, T., & McGhie, M. 4 December. (2025). *SMARTETLA Revisited: Evidence-Based Nursing Education Ten Years On*. Paper presented at Whitireia & WelTec Teaching & Research Hui, Porirua.

Gerrard, M., McGhie, M., Bishop, J., Grace, J., Koperu, S., Laracy, K., Iraia, K., **Waayer, S.**, Scott, T., Rikihana, M., & Tuioti, M. 4 12. (2025). *Whāia te mea ngaro - Relevant to my realities*. Paper presented at Whitireia & WelTec Teaching research hui, Porirua.

Shayola Koperu

Conference Contribution - Other

Tuioti, M., & **Koperu, S.** 5 December. (2025). *Kaupapa Kōrero converges with OSC[AR]E*. Paper presented at Whitireia & WelTec Teaching & Research Hui, Porirua.

Koperu, S., Tipene, D., & Laracy, K. 4 December. (2025). *Kawa Whakaruruhau Te Rito o te Harakeke*. Paper presented at Whitireia & WelTec Teaching & Research Hui, Porirua.

Koperu, S., Mullane, T., & Pool. 5 December. (2025). *Mai I Te Whenua Mai I Te Moana*. Paper presented at Whitireia & WelTec Teaching & Research Hui, Porirua.

Gerrard, M., McGhie, M., Bishop, J., Grace, J., **Koperu, S.**, Laracy, K., Iraia, K., Waayer, S., Scott, T., Rikihana, M., & Tuioti, M. 4 12. (2025). *Whāia te mea ngaro - Relevant to my realities*. Paper presented at Whitireia & WelTec Teaching research hui, Porirua.

Te Wānanga Māori

Jeanette Grace

Conference Contribution - Other

Gerrard, M., McGhie, M., Bishop, J., **Grace, J.**, Koperu, S., Laracy, K., Iraia, K., Waayer, S., Scott, T., Rikihana, M., & Tuioti, M. 4 12. (2025). *Whāia te mea ngaro - Relevant to my realities*. Paper presented at Whitireia & WelTec Teaching research hui, Porirua.

Academic Success

Lee Smith

Conference Contribution – Other

Vos, Marta., Hu, Minjie., Saris, Brenda., Poudyal, Chandra., Moses, Thelma., Assadi, Tony., Baliuag, Chalinor., Arado, Maria Eda., Thammadi, Swetha., Puri, Swati., de Silva, Anjali., Domdom, Joey., **Smith, Lee.**, Tallon, Rachel., Rahman, Shan., Chen, Guoyang., Panjabi, Richa., & Krishan, Gopal. 4 December. (2025). *AI Tools for Researchers: Co-constructing a framework for assessing AI research support tools*. Paper presented at W & W Research Symposium, Wellington.

Mullane, T., Smith, M., **Smith, L.**, Blaikie, C., & Mitaera, J. 4 December. (2025). *Evaluation of a pilot study incorporating an oral health module into the Bachelor of Nursing Pacific curriculum*. Paper presented at Whitireia & WelTec Teaching & Research Hui, Porirua.

Addington, L., **Smith, L.**, & Burke, R. 4 December. (2025). *How safe and inclusive are the nation's polytechnics for rainbow ākonga: Findings of a national vocational education study*. Paper presented at Whitireia & WelTec Teaching & Research Hui, Porirua.

Smith, L., & Saris, B. 14 May. (2025). *The promise of photo elicitation in creative and performing arts research*.³⁰ Paper presented at International Congress of Qualitative Inquiry, Urbana Champaign, Illinois (online).

Journal article

Smith, L.A., Burke, R., Kelsey, F., & Addington, L. (2025). *Coopting the Rainbow: Analyzing Malicious Survey Responses*. *Journal of Homosexuality*, 20, 4. pp.1-21.
doi:<https://doi.org/10.1080/00918369.2025.2540369>

Smith, L., Saris, B., Hull, N., Sullivan, D., Nichols, B., & Maddock, E. (2025). *Creative and Performing Arts Educators Visual Reflect on the Factors that Impact on their Work/Life Balance*. *New Zealand Journal of Educational Studies*, 1, 1. doi:<https://doi.org/10.1007/s40841-025-00389-z>

Foronda, C., **Smith, L.**, Murray, J., & Domdom, J. (2025). *Four First in Family Students' Transition into Degree Study at a Vocational Education Institution*. *New Zealand Journal of Education Studies*, 60, pp.189-204.

Fuller, C. & **Smith, L.** (2025). Whitireia 2025 Journal of Nursing Out Now. *Kaitiaki Nursing New Zealand*, New Zealand. Kaitiaki Nursing New Zealand.

Ahmed AL-Sa'di

Conference Contribution - Other

- Al-Sa'di, A.,** Panjabi, R., Puri, K., & Swati, S. (2025, October 29–30). Tracing the emotional pathways of Facebook Marketplace. Paper presented at the 6th International Conference on Data Analytics for Business and Industry (ICDABI), University of Bahrain
- Al-Sa'di, A.,** Panjabi, R., & Puri, K. (2025, October 29–30). *Trust, negotiation, and skill acquisition in social commerce: Evidence from Facebook Marketplace*. Paper presented at the 6th International Conference on Data Analytics for Business and Industry (ICDABI), University of Bahrain