



TASTER PROGRAMMES 2026

We offer Taster days for secondary school students in years 11, 12 and 13.

We also facilitate Year 10 Taster Days across all campuses.

Gain direct experience and a feel for student life.



For more information visit: <https://www.whitireiaweltec.ac.nz/>

Table of Contents

CAMPUS INFORMATION	3
CARPENTRY	4
AUTOMOTIVE	5
ELECTRICAL	6
TRADE TASTER PLUMBING	7
PAINTING & DECORATING	8
PLASTERING & TILING	9
HAIRDRESSING	10
BARBERING	11
MAKEUP & SKIN BASICS	12
BEAUTY THERAPY	13
SPECIAL EFFECTS	14
NURSING	15
PARAMEDICINE	16
ANIMAL CARE & VETERINARY NURSING	17

Campus Information

WelTec

Wellington Institute of Technology

Students, please meet at Main Reception
located in T Block

21 Kensington Avenue
Petone
Lower Hutt



Whitireia

Students, please meet under the Atrium.

3 Wi Neera Drive Elsdon
Porirua



Construction Campus (J Block)

Wellington Regional School of Construction

Students, please meet in the carpark at the
bottom of the external staircase.

18 Western Hutt Road
Petone
Lower Hutt



Carpentry

School of Construction – Petone J Block
9.30am – 2.30pm

Term 1	Term 2	Term 3
Friday 13 March	Friday 15 May Friday 12 June	Friday 21 August

What you'll be doing

- Join skilled tutors in our purpose-built workshop
- Learn about Health and Safety in our workshop
- Learn how to use a variety of tools
- Measure, cut and assemble using different equipment
- Build and construct something by reading basic building plans
- Experience the campus and tertiary atmosphere
- Ask questions about the programme, career progression and life as a builder

What to wear and bring

- Wear **comfortable closed toe** shoes (leather school shoes are ideal)
- **NO open toe shoes permitted. Crocs will not be considered as closed toe shoes.**
- Bring a water bottle to keep you hydrated.
- Bring a packed lunch.

****Note: Correct footwear MUST be worn in our workshop. Students are also advised a tutor MUST be present when using power tools for Health and Safety reasons.**



Automotive

Whitireia Porirua
9.30am – 2.30pm

Term 2	Term 3
Wednesday 13 May Wednesday 17 June	Wednesday 12 August Wednesday 16 September

What you'll be doing

- Join skilled tutors in our purpose-built workshop
- Learn about Health and Safety in our workshop
- Learn how to check/top up various fluids required to maintain and keep an engine running
- Learn how to change a tyre and balance wheels
- Experience the campus and tertiary atmosphere
- Ask questions about the programme, career progression and life as a Mechanic

What to wear and bring

- Wear **comfortable closed toe** shoes (leather school shoes are ideal)
- **NO open toe shoes permitted. Crocs will not be considered as closed toe shoes.**
- Bring a water bottle to keep you hydrated.
- Bring a packed lunch or there is a café at our Porirua Campus.

****Note: Correct footwear MUST be worn in our workshops to take part in the Taster.**



Electrical

WelTec Petone
9.30am to 2.30pm

Term 2

Friday 29 May
Friday 24 July

Term 3

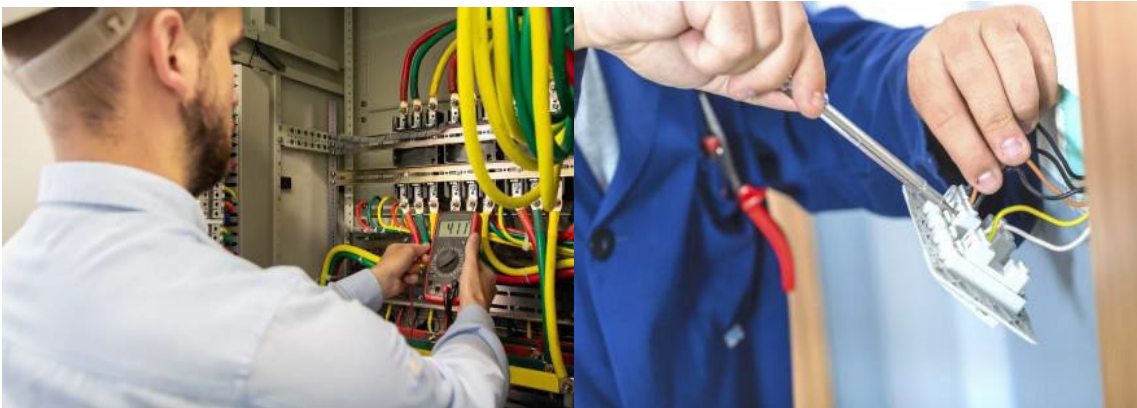
Friday 25 August

What you'll be doing

- Experience student life and join us on campus for a Taster Day
- Join qualified skilled electrical tutors in our purpose-built workshop
- Learn about Health and Safety around handling electricity
- Make and electrically test an extension cord
- Practice stripping cables
- Test a variety of electrical equipment and appliances
- Experience the campus and tertiary atmosphere
- Ask questions about the programme, career progression and life as an Electrician

What to wear and bring

- Wear comfortable clothing and closed toe shoes.
- **Crocs are not considered as closed toe shoes.**
- Bring a water bottle to keep you hydrated.
- Bring a packed lunch or there is a café on campus.



Trade Taster Plumbing

WelTec Petone
9.30am to 2.30pm

Term 2

Friday 22 May

Friday 2 October

What you'll be doing

- Experience student life and join us on campus for a Taster Day
- Join skilled tutors in our purpose-built plumbing environment
- Learn how to use various tools correctly and safely
- Crimping pipework together
- Pressure testing pipework
- Experience the campus and tertiary atmosphere
- Ask questions about the programme, career progression and life as a Plumber

What to wear and bring

- Wear **comfortable closed toe** shoes (leather school shoes are ideal)
- **NO open toe shoes permitted. Crocs will not be considered as closed toe shoes.**
- Bring a water bottle to keep you hydrated.
- Bring a packed lunch or there is a café at our Petone Campus.

****Note: Correct footwear *MUST* be worn in our workshops to take part in the Taster.**



Painting & Decorating

School of Construction – Petone J Block
9.30am – 2.30pm

Term 1	Term 2	Term 3
Friday 13 March	Friday 15 May Friday 12 June	Friday 21 August

What you'll be doing

- Experience the campus and tertiary atmosphere
- Join skilled tutors in our purpose-built painting workshop
- Be introduced to Health and Safety practices in the workplace
- Plan, prepare and paint surfaces using different methods
- Design and create our own decorative finish
- Ask questions about the programme, career progression and life as a Painter Decorator

What to wear and bring

- Wear **comfortable closed toe shoes** (leather school shoes are ideal).
- **NO open toe shoes permitted. crows will not be considered as closed toe shoes.**
- Clothing that you may get paint on.
- Bring a water bottle to keep you hydrated.
- Bring a packed lunch.

****Note: Correct footwear MUST be worn in our workshop. Students are also advised a tutor MUST be present when using power tools for Health and Safety reasons.**



Plastering & Tiling

School of Construction – Petone J Block

9.30am – 2.30pm

Term 1

Friday 13 March

Term 2

Friday 15 May
Friday 12 June

Term 3

Friday 21 August

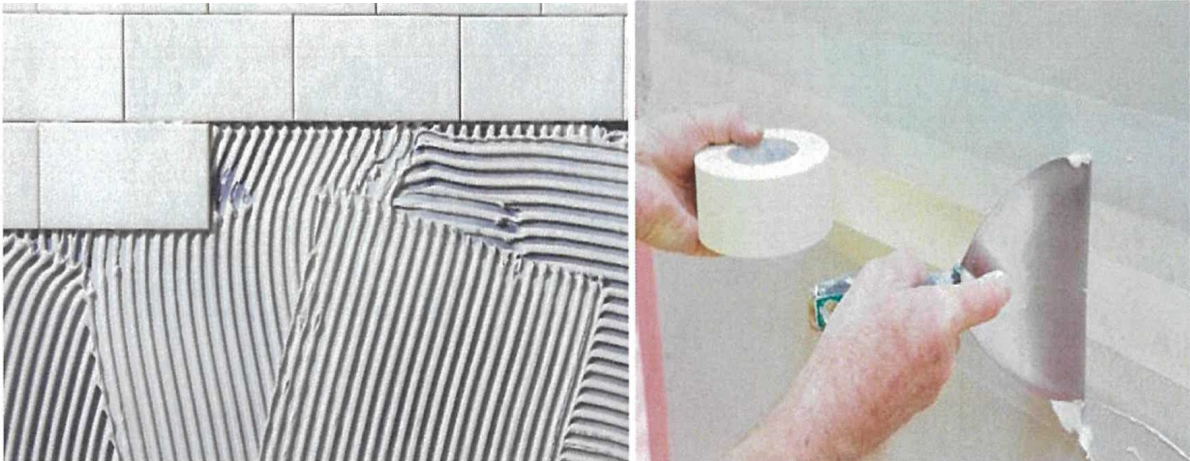
What you'll be doing

- Experience the campus and tertiary atmosphere
- Join skilled trades tutors for plastering and tiling in our workshop Finding out what skills and qualities I need to be successful as a tradie. Be introduced to Health and Safety practices in the workplace
- Learn about the hand and power tools used in our trades. Learn about the materials we use in Plastering and Tiling. Do some practical work plastering and tiling. Hands on.

What to wear and bring

- Wear **comfortable closed toe shoes** (leather school shoes are ideal).
- **NO open toe shoes permitted. crows will not be considered as closed toe shoes.**
- Clothing that you may get plaster and adhesive on.

**Note: Correct footwear MUST be worn in our workshop. Students are also advised a tutor MUST be present when using power tools for Health and Safety reasons.



Hairdressing

WelTec Petone & Whitireia Porirua
9.30am – 2.30pm

Term 1

Term 2

Term 3

Tuesday 1 September (Porirua)

What you'll be doing

- Get a feel for student life and join us on campus for a Taster Day
- Join our skilled tutors in our purpose-built Hair Salon
- Introduction to the Hairdressing industry
- Learn how to use a variety of hairdressing tools
- Learn different styling techniques
- Let your creativity flow and design a hairstyle masterpiece on our mannequins
- Experience the campus and tertiary atmosphere
- Ask questions about the programme, career progression and life as a Hairdresser

What you'll be doing

- Wear **comfortable closed toe shoes** and clothing as you'll be on your feet most of the day.
- **Crocs are not considered as closed toe shoes.**
- Bring a water bottle to keep you hydrated.
- Bring a packed lunch or there is a café at our Porirua and Petone campuses.

****Note: If students are not wearing the correct footwear or clothing, they will not be permitted into our salon for Health and Safety reasons.**



Barbering

WelTec Petone & Whitireia Porirua
9.30am – 2.30pm

Term 2

Thursday 21 May (Porirua Campus)

Term 3

Tuesday 1 September (Porirua Campus)
Wednesday 2 September (Petone)

What you'll be doing

- Get a feel for student life and join us on campus for a Taster Day
- Join skilled tutors in our purpose-built Barber Shop
- Learn how to use a variety of barbering tools
- Learn different styling techniques
- How steady is your hand? Can you complete the shaving challenge?
- Experience the campus and tertiary atmosphere
- Ask questions about the programme, career progression and life as a Barber

What to wear and bring

- Wear **comfortable closed toe shoes** and clothing as you'll be on your feet most of the day.
- **Crocs are not considered as closed toe shoes.**
- Bring a water bottle to keep you hydrated.
- Bring a packed lunch or there is a café at our Porirua campus, if your taster is at Te Auaha there is a variety of food options available in the city.

****Note: If students are not wearing the correct footwear or clothing, they will not be permitted into our salon for Health and Safety reasons.**



Makeup & Skin Basics

WelTec Petone
9.30 – 2.30pm

Term 1

Tuesday 23 June (Petone Campus)

Term 3

Tuesday 1 September (Petone Campus)

What you'll be doing

- Makeup Basics, you'll create a look for day or evening and learn about beauty standards from history and different cultures
- Get a feel for student life and join us on campus for a Taster Day
- A cosmetic experience tailored to you! Match the right foundation to your skin tone
- Join our skilled tutors in our purpose-built training salon
- Learn basic makeup skills and colour matching
- Experience the campus and tertiary atmosphere
- Ask any questions about the programme, career progression and life as a Hairdresser and Makeup Artist

****Note: Students wearing makeup MUST remove it to actively participate in this class**

What to wear and bring

- Wear **comfortable closed toe shoes** and clothing as you'll be on your feet most of the day.
- **Crocs are not considered as closed toe shoes.**
- Bring a water bottle to keep you hydrated.
- Bring a packed lunch or there is a café at our Porirua campus. If your Taster is at Te Auaha there is a variety of food options available in the city.

****Note: If students are not wearing the correct footwear or clothing, they will not be permitted into our salon for Health and Safety reasons.**



Beauty Therapy

WelTec Petone
9.30am -2.30pm

Term 2

Tuesday 1 September

What you'll be doing

- Join skilled tutors in our purpose-built Beauty Salon.
- Learn about the Beauty Therapy Industry.
- Introductory look at the skin.
- Facial cleanse.
- Nailcare - File, hand massage and paint.
- Experience the campus and tertiary atmosphere.
- Ask any questions about the programme, career progression and life as a Beauty Therapist.

****Note: Students wearing makeup MUST remove it to actively participate in this class.**

****Note: Students MUST have natural nails WITHOUT nail polish to actively participate in this class.**

What to wear and bring

- Wear **comfortable closed toe shoes** and clothing as you will spend a large part of the day on your feet.
- **Crocs are not considered as closed toes shoes.**
- Bring a water bottle to keep you hydrated.
- Bring a packed lunch or there is a café at our Petone campus if your Taster is at Te Auaha there is a variety of food options available in the city.

****Note: If students are not wearing the correct footwear or clothing, you will not be permitted into our salon for Health and Safety seasons.**



Special Effects

WelTec Petone
9.30am -2.30pm

Term 2

Wednesday 24 June

Wednesday 2 September

What you'll be doing

- Artistry Special Effects – Learn the basics of special effects makeup artistry and create realistic cuts, bruises and blisters just like in the movies!
- Join skilled tutors in our purpose-built special effects classroom
- Learn about the Makeup Artistry and Special Effects world
- Experience the campus and tertiary atmosphere
- Ask any questions about the programme, career progression and life as a Special Effects Makeup Artist

****Note: Students wearing makeup MUST remove it to actively participate in this class**

What to wear and bring

- Wear **comfortable closed toe shoes** and clothing as you'll be on your feet most of the day.
- **Crocs are not considered as closed toes shoes.**
- Bring a water bottle to keep you hydrated.
- Bring a packed lunch or there is a variety of food options available in the city.

****Note: If students are not wearing the correct footwear or clothing, they will not be permitted into our salon for Health and Safety reasons.**



FAKE WOUNDS

Nursing

Whitireia Porirua
9.30am – 12pm

Term 1	Term 2	Term 3	Term 4
	Friday 15 May Monday 22 June	Thursday 13 August	Friday 30 October

What you'll be doing

- Meet our tutors and tour our purpose-built simulation suites
- Learn a brief history of nursing
- Interactive session with simulation equipment
- Ask any questions about the programme, career progression and life as a Nurse.

What to wear and bring

- To meet Health and Safety requirements, you **must** wear **closed-toe** shoes to enter the simulation suites.

****Note: If students are not wearing the correct footwear or clothing, they will not be permitted into our salon for Health and Safety reasons.**



Paramedicine

Whitireia Porirua
9.30am -12.30pm

Term 2

Friday 22 May

What you'll be doing

- Meet our tutors and tour our purpose-built simulation suites
- Learn a brief history of paramedicine
- Interactive session with simulation equipment
- Ask any questions about the programme, career progression and life as a paramedic

What to wear and bring

- To meet Health and Safety requirements, you **must** wear **closed-toe** shoes to enter the simulation suites.

****Note: If students are not wearing the correct footwear or clothing, they will not be permitted into our salon for Health and Safety reasons.**



Animal Care & Veterinary Nursing

WelTec Peone
9.30am – 2.30pm

Term 2

Thursday 7 May

Term 3

Friday 28 August

What you'll be doing

- Meet our tutors and tour our Veterinary Lab
- Learn about and use different medical tools and equipment
- Gain an understanding of typical animal diseases and how they are diagnosed
- Learn about surgical nursing
- Learn about grooming domestic pets
- Learn basic animal CPR skills
- Experience the campus and tertiary environment
- Ask any questions about the programme, career progression and life as a Vet Nurse or in an Animal Care facility

What to wear and bring

- To meet Health and Safety requirements, you **must** wear **closed-toe** shoes to enter the labs.
- Bring a water bottle to keep you hydrated.
- Bring a packed lunch or there is a café at our Petone campus.

****Note: there will be no animals on site**

